

# VEGFC antibody

**Cat. No. GTX52393**

<b>Host</b>	Rabbit
<b>Clonality</b>	Polyclonal
<b>Isotype</b>	IgG
<b>Application</b>	WB, Neutralizing/Inhibition
<b>Reactivity</b>	Mouse, Rat

Reference ( 1 )  
Package  
100 µg

## APPLICATION

### Application Note

\*Optimal dilutions/concentrations should be determined by the researcher.

Suggested dilution	Recommended dilution
WB	Assay dependent
Neutralizing/Inhibition	Assay dependent

Not tested in other applications.

**Calculated MW** 46 kDa. ( [Note](#) )

## PROPERTIES

<b>Form</b>	Liquid
<b>Buffer</b>	PBS
<b>Preservative</b>	No preservative
<b>Storage</b>	Store as concentrated solution. Centrifuge briefly prior to opening vial. For short-term storage (1-2 weeks), store at 4°C. For long-term storage, aliquot and store at -20°C or below. Avoid multiple freeze-thaw cycles.
<b>Concentration</b>	Batch dependent (Please refer to the vial label for the specific concentration.)
<b>Immunogen</b>	Rat VEGF-C full length protein
<b>Purification</b>	Purified by affinity chromatography
<b>Conjugation</b>	Unconjugated

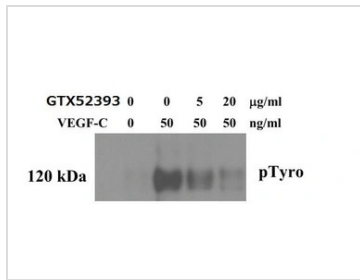
### Note

For laboratory research use only. Not for any clinical, therapeutic, or diagnostic use in humans or animals. Not for animal or human consumption.

Purchasers shall not, and agree not to enable third parties to, analyze, copy, reverse engineer or otherwise attempt to determine the structure or sequence of the product.



For full product information, images and publications, please visit our [website](#).

**DATA IMAGES**

**GTX52393 Neutralizing/Inhibition Image**

Neutralizing/Blocking assay analysis of mouse skin endothelial cells (SENDs) treated with or without rat VEGFC (50ng/ml) in the absence or presence of 5 or 20 μg/ml GTX52393 VEGFC antibody for 30 mins. Phospho-VEGFR3 was detected with IP-Western for pTyrosine.



For full product information, images and publications, please visit our [website](https://www.genetex.com).