

VEGF Receptor 2 antibody

Cat. No. GTX52395

Host	Goat
Clonality	Polyclonal
Isotype	IgG
Applications	WB, IP, Activation
Reactivity	Human

Package
50 µg

Applications

Application Note

*Optimal dilutions/concentrations should be determined by the researcher.

Suggested dilution	Recommended dilution
WB	Assay dependent
IP	Assay dependent
Activation	Assay dependent

Note : This antibody can induce hVEGFR2 phosphorylation in HUVECs at > 0.5 µg/mL.

Not tested in other applications.

Calculated MW 152 kDa. ([Note](#))

Properties

Form	Liquid
Buffer	PBS
Preservative	No preservatives
Storage	Store as concentrated solution. Centrifuge briefly prior to opening vial. For short-term storage (1-2 weeks), store at 4°C. For long-term storage, aliquot and store at -20°C or below. Avoid multiple freeze-thaw cycles.
Concentration	Batch dependent (Please refer to the vial label for the specific concentration.)
Immunogen	hVEGFR2 N-terminal fragment (N30-200)
Purification	Purified by affinity chromatography
Conjugation	Unconjugated

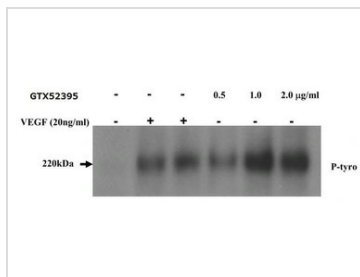
Note

For laboratory research use only. Not for any clinical, therapeutic, or diagnostic use in humans or animals. Not for animal or human consumption.

Purchasers shall not, and agree not to enable third parties to, analyze, copy, reverse engineer or otherwise attempt to determine the structure or sequence of the product.



For full product information, images and publications, please visit our [website](#).

DATA IMAGES

GTXS2395 Activation Image

Activation assay analysis of HUVECs stimulated with 0.5, 1.0 and 2.0 $\mu\text{g/ml}$ GTXS2395 VEGF Receptor 2 antibody or 20ng/ml VEGF for 30mins. The phospho-VEGFR2 was detected with IP-Western for P-Tyrosine.



For full product information, images and publications, please visit our [website](https://www.genetex.com).