

Interferon gamma Receptor 1 antibody [MAB0830]

Cat. No. GTX52418

Host	Rat
Clonality	Monoclonal
Isotype	IgG2
Applications	FCM, Neutralizing/Inhibition
Reactivity	Mouse

References (1)

Package

200 µg

Applications

Application Note

*Optimal dilutions/concentrations should be determined by the researcher.

Suggested dilution	Recommended dilution
FCM	Assay dependent
Neutralizing/Inhibition	Assay dependent

Note : Blocking IFNgamma and receptor binding

Not tested in other applications.

Properties

Form	Liquid
Buffer	PBS
Preservative	No preservatives
Storage	Store as concentrated solution. Centrifuge briefly prior to opening vial. For short-term storage (1-2 weeks), store at 4°C. For long-term storage, aliquot and store at -20°C or below. Avoid multiple freeze-thaw cycles.
Concentration	Batch dependent (Please refer to the vial label for the specific concentration.)
Immunogen	Mouse monomyelocytic cell line
Purification	Protein A/G purified From tissue culture supernatant
Conjugation	Unconjugated

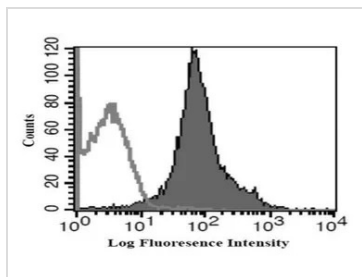
Note

For laboratory research use only. Not for any clinical, therapeutic, or diagnostic use in humans or animals. Not for animal or human consumption.

Purchasers shall not, and agree not to enable third parties to, analyze, copy, reverse engineer or otherwise attempt to determine the structure or sequence of the product.



For full product information, images and publications, please visit our [website](#).

DATA IMAGES

GTX52418 FCM Image

FACS analysis of mouse splenocytes using GTX52418 Interferon gamma Receptor 1 antibody [MAB0830].



For full product information, images and publications, please visit our [website](#).