

TIE2 antibody [21G7]

Cat. No. GTX52471

Host	Mouse
Clonality	Monoclonal
Isotype	IgG1
Application	WB, IHC-P, ELISA
Reactivity	Human

Package
100 µg

APPLICATION

Application Note

*Optimal dilutions/concentrations should be determined by the researcher.

Suggested dilution	Recommended dilution
WB	1:500 - 1:1000
IHC-P	Assay dependent
ELISA	1:1000 - 1:2000

Not tested in other applications.

Calculated MW 126 kDa. ([Note](#))

Product Note This antibody recognizes human Tie2 in western blot without cross reactivity with human Tie1.

PROPERTIES

Form	Liquid
Buffer	PBS
Preservative	No preservative
Storage	Store as concentrated solution. Centrifuge briefly prior to opening vial. For short-term storage (1-2 weeks), store at 4°C. For long-term storage, aliquot and store at -20°C or below. Avoid multiple freeze-thaw cycles.
Concentration	200 µg/ml (Please refer to the vial label for the specific concentration.)
Immunogen	hTie2 extracellular domain
Purification	Protein G purified From tissue culture supernatant
Conjugation	Unconjugated



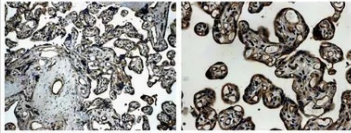
For full product information, images and publications, please visit our [website](#).

For laboratory research use only. Not for any clinical, therapeutic, or diagnostic use in humans or animals. Not for animal or human consumption.

Note

Purchasers shall not, and agree not to enable third parties to, analyze, copy, reverse engineer or otherwise attempt to determine the structure or sequence of the product.

DATA IMAGES



GTX52471 IHC-P Image

IHC-P analysis of formalin fixed human placenta tissue using GTX52471 TIE2 antibody [21G7].



For full product information, images and publications, please visit our [website](#).