

TIMP1 antibody [4A16]

Cat. No. GTX52486

Host	Mouse
Clonality	Monoclonal
Isotype	IgG2
Application	WB, IHC-P
Reactivity	Human

Package
100 µg

APPLICATION

Application Note

*Optimal dilutions/concentrations should be determined by the researcher.

Suggested dilution	Recommended dilution
WB	1:100 - 1:1000
IHC-P	1:25 - 1:50

Not tested in other applications.

Calculated MW	23 kDa. (Note)
Product Note	This antibody recognizes human TIMP-1 in western blot. No cross-reactivity to human TIMP-2 is noted.

PROPERTIES

Form	Liquid
Buffer	PBS
Preservative	No preservative
Storage	Store as concentrated solution. Centrifuge briefly prior to opening vial. For short-term storage (1-2 weeks), store at 4°C. For long-term storage, aliquot and store at -20°C or below. Avoid multiple freeze-thaw cycles.
Concentration	Batch dependent (Please refer to the vial label for the specific concentration.)
Immunogen	Human recombinant TIMP-1 protein
Purification	Protein G purified From tissue culture supernatant
Conjugation	Unconjugated

Note

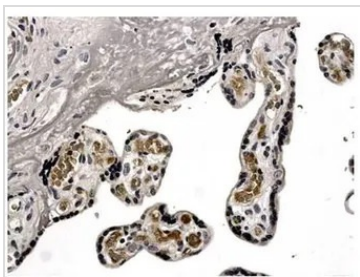
For laboratory research use only. Not for any clinical, therapeutic, or diagnostic use in humans or animals. Not for animal or human consumption.

Purchasers shall not, and agree not to enable third parties to, analyze, copy, reverse engineer or otherwise attempt to determine the structure or sequence of the product.



For full product information, images and publications, please visit our [website](#).

DATA IMAGES



GTX52486 IHC-P Image

IHC-P analysis of formalin fixed human placenta tissue using GTX52486 TIMP1 antibody [4A16].



For full product information, images and publications, please visit our [website](#).