

ABCG2 antibody [2J39]

Cat. No. GTX52498

Host	Mouse
Clonality	Monoclonal
Isotype	IgG2
Applications	ICC/IF, IHC-P, FCM
Reactivity	Human

Package
50 µg

Applications

Application Note

*Optimal dilutions/concentrations should be determined by the researcher.

Suggested dilution	Recommended dilution
ICC/IF	1:100 - 1:1000
IHC-P	Assay dependent
FCM	1:100 - 1:1000

Not tested in other applications.

Properties

Form	Liquid
Buffer	PBS
Preservative	No preservatives
Storage	Store as concentrated solution. Centrifuge briefly prior to opening vial. For short-term storage (1-2 weeks), store at 4°C. For long-term storage, aliquot and store at -20°C or below. Avoid multiple freeze-thaw cycles.
Concentration	200 µg/ml (Please refer to the vial label for the specific concentration.)
Immunogen	Human recombinant rHABCG2 protein
Purification	Protein G purified From tissue culture supernatant
Conjugation	Unconjugated

Note

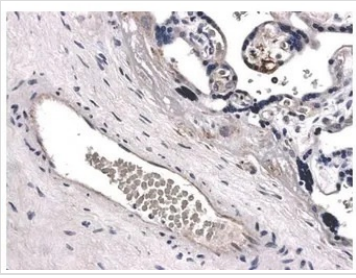
For laboratory research use only. Not for any clinical, therapeutic, or diagnostic use in humans or animals. Not for animal or human consumption.

Purchasers shall not, and agree not to enable third parties to, analyze, copy, reverse engineer or otherwise attempt to determine the structure or sequence of the product.



For full product information, images and publications, please visit our [website](#).

DATA IMAGES

**GTX52498 IHC-P Image**

IHC-P analysis of formalin fixed human placenta tissue using GTX52498 ABCG2 antibody [2J39].



For full product information, images and publications, please visit our [website](#).