

## IL20 Receptor alpha antibody [9F40]

Cat. No. GTX52848

Host	Mouse
Clonality	Monoclonal
Isotype	IgG1
Applications	WB, IHC-P
Reactivity	Human

Package  
100 µg

## Applications

## Application Note

\*Optimal dilutions/concentrations should be determined by the researcher.

Suggested dilution	Recommended dilution
WB	1:500 - 1:1000
IHC-P	1:20 - 1:100

Not tested in other applications.

Calculated MW 62 kDa. ( [Note](#) )

## Properties

Form	Liquid
Buffer	PBS
Preservative	No preservatives
Storage	Store as concentrated solution. Centrifuge briefly prior to opening vial. For short-term storage (1-2 weeks), store at 4°C. For long-term storage, aliquot and store at -20°C or below. Avoid multiple freeze-thaw cycles.
Concentration	500 µg/ml (Please refer to the vial label for the specific concentration.)
Immunogen	Human recombinant IL-20 RαEC domain
Purification	Protein G purified From tissue culture supernatant
Conjugation	Unconjugated

## Note

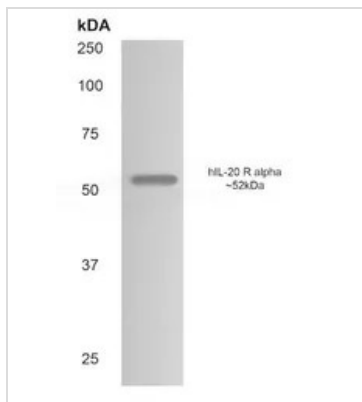
For laboratory research use only. Not for any clinical, therapeutic, or diagnostic use in humans or animals. Not for animal or human consumption.

Purchasers shall not, and agree not to enable third parties to, analyze, copy, reverse engineer or otherwise attempt to determine the structure or sequence of the product.



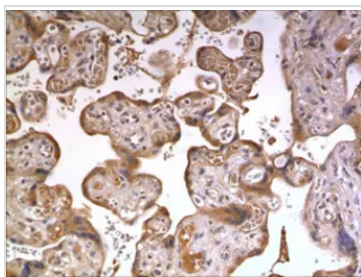
For full product information, images and publications, please visit our [website](#).

## DATA IMAGES



### GTX52848 WB Image

WB analysis of human placenta tissue lysate using GTX52848 IL20 Receptor alpha antibody [9F40].



### GTX52848 IHC-P Image

IHC-P analysis of human placenta tissue using GTX52848 IL20 Receptor alpha antibody [9F40].



For full product information, images and publications, please visit our [website](#).