

ULBP3 antibody [6E12]

Cat. No. GTX53049

Host	Mouse
Clonality	Monoclonal
Isotype	IgG2
Applications	WB, IHC-P
Reactivity	Human

Package
100 µg

Applications

Application Note

*Optimal dilutions/concentrations should be determined by the researcher.

Suggested dilution	Recommended dilution
WB	1:500 - 1:1000
IHC-P	Assay dependent

Not tested in other applications.

Calculated MW 28 kDa. ([Note](#))

Properties

Form	Liquid
Buffer	PBS
Preservative	No preservative
Storage	Store as concentrated solution. Centrifuge briefly prior to opening vial. For short-term storage (1-2 weeks), store at 4°C. For long-term storage, aliquot and store at -20°C or below. Avoid multiple freeze-thaw cycles.
Concentration	500 µg/ml (Please refer to the vial label for the specific concentration.)
Immunogen	Human recombinant ULBP-3
Purification	Protein G purified From tissue culture supernatant
Conjugation	Unconjugated

Note

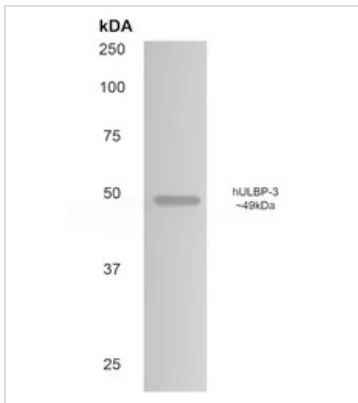
For laboratory research use only. Not for any clinical, therapeutic, or diagnostic use in humans or animals. Not for animal or human consumption.

Purchasers shall not, and agree not to enable third parties to, analyze, copy, reverse engineer or otherwise attempt to determine the structure or sequence of the product.



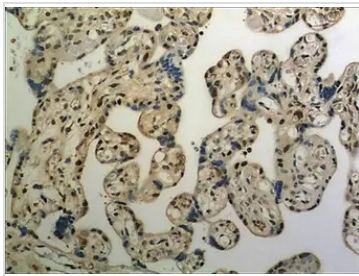
For full product information, images and publications, please visit our [website](#).

DATA IMAGES



GTX53049 WB Image

WB analysis of human placenta tissue lysate using GTX53049 ULBP3 antibody [6E12].



GTX53049 IHC-P Image

IHC-P analysis of 4% PFA fixed human placenta tissue using GTX53049 ULBP3 antibody [6E12].

Antigen retrieval : Proteinase K (20ug/ml PBS), RT 15min



For full product information, images and publications, please visit our [website](#).