

## Neurotrophin 4 antibody [31A1]

**Cat. No. GTX53069**

<b>Host</b>	Mouse
<b>Clonality</b>	Monoclonal
<b>Isotype</b>	IgG1
<b>Applications</b>	WB
<b>Reactivity</b>	Human

**Package**  
100 µg

## Applications

**Application Note**

\*Optimal dilutions/concentrations should be determined by the researcher.

Suggested dilution	Recommended dilution
--------------------	----------------------

WB	1:500 - 1:1000
----	----------------

Not tested in other applications.

<b>Calculated MW</b>	22 kDa. ( <a href="#">Note</a> )
----------------------	----------------------------------

## Properties

<b>Form</b>	Liquid
-------------	--------

<b>Buffer</b>	PBS
---------------	-----

<b>Preservative</b>	No preservatives
---------------------	------------------

<b>Storage</b>	Store as concentrated solution. Centrifuge briefly prior to opening vial. For short-term storage (1-2 weeks), store at 4°C. For long-term storage, aliquot and store at -20°C or below. Avoid multiple freeze-thaw cycles.
----------------	--

<b>Concentration</b>	200 µg/ml (Please refer to the vial label for the specific concentration.)
----------------------	--

<b>Immunogen</b>	Recombinant Human NT-4
------------------	------------------------

<b>Purification</b>	Protein G purified From tissue culture supernatant
---------------------	---

<b>Conjugation</b>	Unconjugated
--------------------	--------------

**Note**

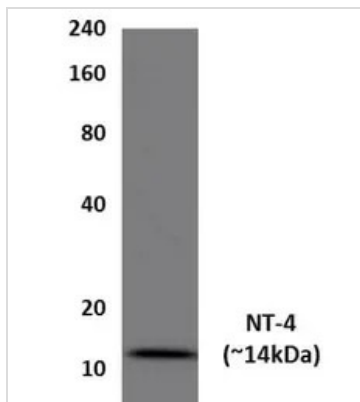
For laboratory research use only. Not for any clinical, therapeutic, or diagnostic use in humans or animals. Not for animal or human consumption.

Purchasers shall not, and agree not to enable third parties to, analyze, copy, reverse engineer or otherwise attempt to determine the structure or sequence of the product.



For full product information, images and publications, please visit our [website](#).

## DATA IMAGES

**GTX53069 WB Image**

WB analysis of HEK293 expressing human NT-4 using GTX53069 Neurotrophin 4 antibody [31A1].



For full product information, images and publications, please visit our [website](#).