

# FGFR2 antibody [7C24]

**Cat. No. GTX53116**

<b>Host</b>	Rat
<b>Clonality</b>	Monoclonal
<b>Isotype</b>	IgG2
<b>Applications</b>	WB, IHC-P
<b>Reactivity</b>	Mouse

**Package**  
100 µg

## Applications

### Application Note

\*Optimal dilutions/concentrations should be determined by the researcher.

Suggested dilution	Recommended dilution
WB	1:100 - 1:1000
IHC-P	1:50 - 1:200

Not tested in other applications.

**Calculated MW** 92 kDa. ( [Note](#) )

## Properties

<b>Form</b>	Liquid
<b>Buffer</b>	PBS
<b>Preservative</b>	No preservatives
<b>Storage</b>	Store as concentrated solution. Centrifuge briefly prior to opening vial. For short-term storage (1-2 weeks), store at 4°C. For long-term storage, aliquot and store at -20°C or below. Avoid multiple freeze-thaw cycles.
<b>Concentration</b>	200 µg/ml (Please refer to the vial label for the specific concentration.)
<b>Immunogen</b>	Mouse FGF-R2 extracellular domain
<b>Purification</b>	Protein G purified From tissue culture supernatant
<b>Conjugation</b>	Unconjugated

### Note

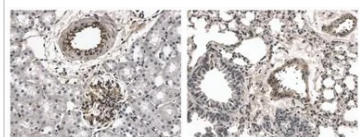
For laboratory research use only. Not for any clinical, therapeutic, or diagnostic use in humans or animals. Not for animal or human consumption.

Purchasers shall not, and agree not to enable third parties to, analyze, copy, reverse engineer or otherwise attempt to determine the structure or sequence of the product.



For full product information, images and publications, please visit our [website](#).

## DATA IMAGES



### GTX53116 IHC-P Image

IHC-P analysis of kidney and lung tissue sections from LPS exposed mouse using GTX53116 FGFR2 antibody [7C24].



For full product information, images and publications, please visit our [website](#).