

## LYVE1 antibody [4D17]

Cat. No. GTX53124

Host	Rat
Clonality	Monoclonal
Isotype	IgG2
Applications	WB, IHC-P
Reactivity	Mouse

## Package

50 µg

## Applications

## Application Note

\*Optimal dilutions/concentrations should be determined by the researcher.

Suggested dilution	Recommended dilution
WB	1:500 - 1:1000
IHC-P	Assay dependent

Not tested in other applications.

Calculated MW 35 kDa. ( [Note](#) )

## Properties

Form	Liquid
Buffer	PBS
Preservative	No preservatives
Storage	Store as concentrated solution. Centrifuge briefly prior to opening vial. For short-term storage (1-2 weeks), store at 4°C. For long-term storage, aliquot and store at -20°C or below. Avoid multiple freeze-thaw cycles.
Concentration	200 µg/ml (Please refer to the vial label for the specific concentration.)
Immunogen	Mouse recombinant LYVE-1
Purification	Protein G purified From tissue culture supernatant
Conjugation	Unconjugated

## Note

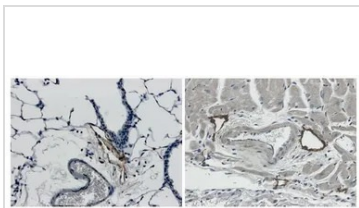
For laboratory research use only. Not for any clinical, therapeutic, or diagnostic use in humans or animals. Not for animal or human consumption.

Purchasers shall not, and agree not to enable third parties to, analyze, copy, reverse engineer or otherwise attempt to determine the structure or sequence of the product.



For full product information, images and publications, please visit our [website](#).

## DATA IMAGES



### GTX53124 IHC-P Image

IHC-P analysis of mouse lung and heart tissue sections from LPS exposed mouse using GTX53124 LYVE1 antibody [4D17].



For full product information, images and publications, please visit our [website](#).