

# IL2 Receptor alpha antibody [MAB0710]

**Cat. No. GTX53128**

<b>Host</b>	Rat
<b>Clonality</b>	Monoclonal
<b>Isotype</b>	IgG1
<b>Applications</b>	IHC-P, FCM
<b>Reactivity</b>	Mouse

**Package**  
100 µg

## Applications

### Application Note

\*Optimal dilutions/concentrations should be determined by the researcher.

Suggested dilution	Recommended dilution
IHC-P	1:20 - 1:300
FCM	1:100 - 1:1000

Not tested in other applications.

## Properties

<b>Form</b>	Liquid
<b>Buffer</b>	PBS
<b>Preservative</b>	No preservatives
<b>Storage</b>	Store as concentrated solution. Centrifuge briefly prior to opening vial. For short-term storage (1-2 weeks), store at 4°C. For long-term storage, aliquot and store at -20°C or below. Avoid multiple freeze-thaw cycles.
<b>Concentration</b>	500 µg/ml (Please refer to the vial label for the specific concentration.)
<b>Immunogen</b>	Recombinant Mouse CD25 protein
<b>Purification</b>	Protein A/G purified From tissue culture supernatant
<b>Conjugation</b>	Unconjugated

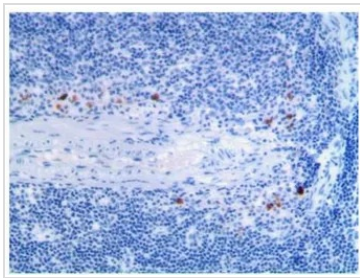
### Note

For laboratory research use only. Not for any clinical, therapeutic, or diagnostic use in humans or animals. Not for animal or human consumption.

Purchasers shall not, and agree not to enable third parties to, analyze, copy, reverse engineer or otherwise attempt to determine the structure or sequence of the product.



For full product information, images and publications, please visit our [website](#).

**DATA IMAGES**

**GTX53128 IHC-P Image**

IHC-P analysis of formalin fixed mouse spleen tissue section using GTX53128 IL2 Receptor alpha antibody [MAB0710].



For full product information, images and publications, please visit our [website](#).