

EphA2 antibody [8F21]

Cat. No. GTX53140

| | |
|--------------|------------|
| Host | Rat |
| Clonality | Monoclonal |
| Isotype | IgG1 |
| Applications | WB, IHC-P |
| Reactivity | Mouse |

Package
100 µg

Applications

Application Note

*Optimal dilutions/concentrations should be determined by the researcher.

| Suggested dilution | Recommended dilution |
|--------------------|----------------------|
| WB | 1:100 - 1:1000 |
| IHC-P | 1:100 - 1:200 |

Not tested in other applications.

| | |
|---------------|--|
| Calculated MW | 109 kDa. (Note) |
| Product Note | This antibody does not cross-react with recombinant mouse EphA3, 4, 6, 7, 8, and EphB1, 2, 3, 4, or 6. |

Properties

| | |
|---------------|--|
| Form | Liquid |
| Buffer | PBS |
| Preservative | No preservatives |
| Storage | Store as concentrated solution. Centrifuge briefly prior to opening vial. For short-term storage (1-2 weeks), store at 4°C. For long-term storage, aliquot and store at -20°C or below. Avoid multiple freeze-thaw cycles. |
| Concentration | 200 µg/ml (Please refer to the vial label for the specific concentration.) |
| Immunogen | Recombinant mouse EphA2 extracellular domain |
| Purification | Protein A/G purified From tissue culture supernatant |
| Conjugation | Unconjugated |

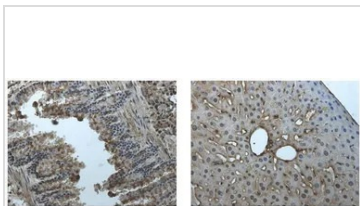
Note

For laboratory research use only. Not for any clinical, therapeutic, or diagnostic use in humans or animals. Not for animal or human consumption.

Purchasers shall not, and agree not to enable third parties to, analyze, copy, reverse engineer or otherwise attempt to determine the structure or sequence of the product.



For full product information, images and publications, please visit our [website](#).

DATA IMAGES

GTX53140 IHC-P Image

IHC-P analysis of kidney and liver tissue sections from LPS exposed mouse using GTX53140 EphA2 antibody [8F21].



For full product information, images and publications, please visit our [website](#).