

# EphA4 antibody [11C13]

**Cat. No. GTX53142**

<b>Host</b>	Rat
<b>Clonality</b>	Monoclonal
<b>Isotype</b>	IgG1
<b>Application</b>	WB, IHC-P
<b>Reactivity</b>	Mouse

**Package**  
100 µg

## APPLICATION

### Application Note

\*Optimal dilutions/concentrations should be determined by the researcher.

Suggested dilution	Recommended dilution
WB	1:100 - 1:1000
IHC-P	1:50 - 1:200

Not tested in other applications.

<b>Calculated MW</b>	110 kDa. ( <a href="#">Note</a> )
<b>Product Note</b>	This antibody does not cross-react with recombinant mouse EphA2, EphA6, EphA7, EphA8 and EphB2, EphB3, EphB4, and EphB6

## PROPERTIES

<b>Form</b>	Liquid
<b>Buffer</b>	PBS
<b>Preservative</b>	No preservative
<b>Storage</b>	Store as concentrated solution. Centrifuge briefly prior to opening vial. For short-term storage (1-2 weeks), store at 4°C. For long-term storage, aliquot and store at -20°C or below. Avoid multiple freeze-thaw cycles.
<b>Concentration</b>	200 µg/ml (Please refer to the vial label for the specific concentration.)
<b>Immunogen</b>	Mouse EphA4 extracellular domain
<b>Purification</b>	Protein A/G purified From tissue culture supernatant
<b>Conjugation</b>	Unconjugated

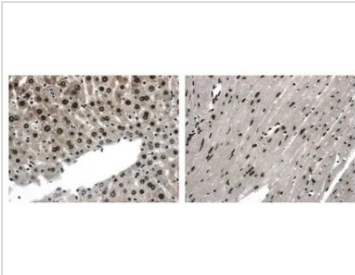


For full product information, images and publications, please visit our [website](#).

For laboratory research use only. Not for any clinical, therapeutic, or diagnostic use in humans or animals. Not for animal or human consumption.

**Note**

Purchasers shall not, and agree not to enable third parties to, analyze, copy, reverse engineer or otherwise attempt to determine the structure or sequence of the product.

**DATA IMAGES**

**GTX53142 IHC-P Image**

IHC-P analysis of liver and heart tissue sections from LPS exposed mouse using GTX53142 EphA4 antibody [11C13].



For full product information, images and publications, please visit our [website](#).