

EphA6 antibody [9J12]

Cat. No. GTX53143

Host	Rat
Clonality	Monoclonal
Isotype	IgG1
Applications	WB, IHC-P
Reactivity	Mouse

Package
100 µg

Applications

Application Note

*Optimal dilutions/concentrations should be determined by the researcher.

Suggested dilution	Recommended dilution
WB	1:100 - 1:1000
IHC-P	1:50 - 1:200

Not tested in other applications.

Product Note

This antibody does not cross-react with recombinant mouse EphA2, EphA3, EphA4, EphA7, EphA8 and EphB2, EphB3, EphB4, and EphB6

Properties

Form	Liquid
Buffer	PBS
Preservative	No preservatives
Storage	Store as concentrated solution. Centrifuge briefly prior to opening vial. For short-term storage (1-2 weeks), store at 4°C. For long-term storage, aliquot and store at -20°C or below. Avoid multiple freeze-thaw cycles.
Concentration	200 µg/ml (Please refer to the vial label for the specific concentration.)
Immunogen	Mouse EphA6 extracellular domain
Purification	Protein A/G purified From tissue culture supernatant
Conjugation	Unconjugated

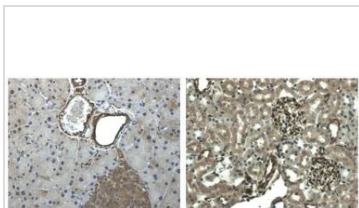
Note

For laboratory research use only. Not for any clinical, therapeutic, or diagnostic use in humans or animals. Not for animal or human consumption.

Purchasers shall not, and agree not to enable third parties to, analyze, copy, reverse engineer or otherwise attempt to determine the structure or sequence of the product.



For full product information, images and publications, please visit our [website](#).

DATA IMAGES

GTX53143 IHC-P Image

IHC-P analysis of pancreas and kidney tissue sections from LPS exposed mouse using GTX53143 EphA6 antibody [9J12].



For full product information, images and publications, please visit our [website](#).