

## Endostatin antibody [3H11]

Cat. No. GTX53149

|              |            |
|--------------|------------|
| Host         | Rat        |
| Clonality    | Monoclonal |
| Isotype      | IgG2       |
| Applications | WB, IHC-P  |
| Reactivity   | Mouse      |

Package  
100 µg

## Applications

## Application Note

\*Optimal dilutions/concentrations should be determined by the researcher.

| Suggested dilution | Recommended dilution |
|--------------------|----------------------|
| WB                 | 1:50 - 1:1000        |
| IHC-P              | 1:50 - 1:200         |

Not tested in other applications.

Calculated MW 182 kDa. ([Note](#))

## Properties

|               |  |
|---------------|--|
| Form          | Liquid   |
| Buffer        | PBS  |
| Preservative  | No preservatives   |
| Storage       | Store as concentrated solution. Centrifuge briefly prior to opening vial. For short-term storage (1-2 weeks), store at 4°C. For long-term storage, aliquot and store at -20°C or below. Avoid multiple freeze-thaw cycles. |
| Concentration | 200 µg/ml (Please refer to the vial label for the specific concentration.)   |
| Immunogen     | Recombinant Mouse Endostatin Protein   |
| Purification  | Protein A/G purified<br>From tissue culture supernatant  |
| Conjugation   | Unconjugated   |

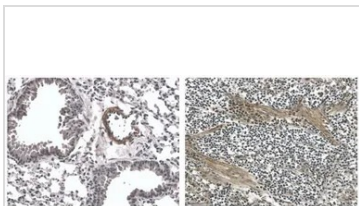
## Note

For laboratory research use only. Not for any clinical, therapeutic, or diagnostic use in humans or animals. Not for animal or human consumption.

Purchasers shall not, and agree not to enable third parties to, analyze, copy, reverse engineer or otherwise attempt to determine the structure or sequence of the product.



For full product information, images and publications, please visit our [website](#).

**DATA IMAGES**

**GTX53149 IHC-P Image**

IHC-P analysis of lung and spleen tissue sections from LPS exposed mouse using GTX53149 Endostatin antibody [3H11].



For full product information, images and publications, please visit our [website](#).