

Pan-Endothelial Cell Marker antibody [4J13]

Cat. No. GTX53150

Host	Rat
Clonality	Monoclonal
Isotype	IgG2
Applications	IHC-P, FCM, IP
Reactivity	Mouse

Package
100 µg

Applications

Application Note

*Optimal dilutions/concentrations should be determined by the researcher.

Suggested dilution	Recommended dilution
IHC-P	1:100 - 1:200
FCM	1:50 - 1:200
IP	1:100 - 1:400

Not tested in other applications.

Properties

Form	Liquid
Buffer	PBS
Preservative	No preservative
Storage	Store as concentrated solution. Centrifuge briefly prior to opening vial. For short-term storage (1-2 weeks), store at 4°C. For long-term storage, aliquot and store at -20°C or below. Avoid multiple freeze-thaw cycles.
Concentration	500 µg/ml (Please refer to the vial label for the specific concentration.)
Immunogen	Cell lysates of mouse endothelial cells
Purification	Protein A/G purified From tissue culture supernatant
Conjugation	Unconjugated

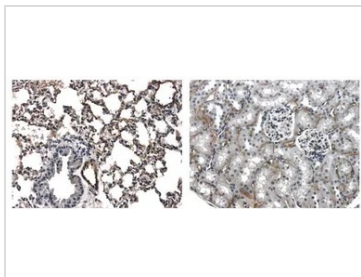
Note

For laboratory research use only. Not for any clinical, therapeutic, or diagnostic use in humans or animals. Not for animal or human consumption.

Purchasers shall not, and agree not to enable third parties to, analyze, copy, reverse engineer or otherwise attempt to determine the structure or sequence of the product.



For full product information, images and publications, please visit our [website](#).

DATA IMAGES

GTX53150 IHC-P Image

IHC-P analysis of 4% PFA fixed liver and lung tissue sections from LPS exposed mouse using GTX53150 Pan-Endothelial Cell Marker antibody [4J13].



For full product information, images and publications, please visit our [website](#).