

Podoplanin antibody [10C3]

Cat. No. GTX53151**Host** Golden Syrian Hamster**Clonality** Monoclonal**Isotype** IgG**Applications** IHC-P, FCM, IP**Reactivity** Mouse**Package**

100 µg

Applications

Application Note

*Optimal dilutions/concentrations should be determined by the researcher.

Suggested dilution **Recommended dilution**

IHC-P 1:100 - 1:200

FCM 1:50 - 1:200

IP 1:100 - 1:400

Not tested in other applications.

Properties

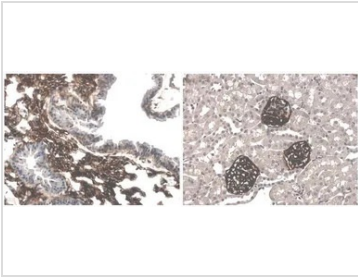
Form Liquid**Buffer** PBS**Preservative** No preservatives**Storage** Store as concentrated solution. Centrifuge briefly prior to opening vial. For short-term storage (1-2 weeks), store at 4°C. For long-term storage, aliquot and store at -20°C or below. Avoid multiple freeze-thaw cycles.**Concentration** 200 µg/ml (Please refer to the vial label for the specific concentration.)**Immunogen** Cell lysates of mouse lymphocytes**Purification** Protein A/G purified
From tissue culture supernatant**Conjugation** Unconjugated**Note**

For laboratory research use only. Not for any clinical, therapeutic, or diagnostic use in humans or animals. Not for animal or human consumption.

Purchasers shall not, and agree not to enable third parties to, analyze, copy, reverse engineer or otherwise attempt to determine the structure or sequence of the product.

For full product information, images and publications, please visit our [website](#).

DATA IMAGES

**GTX53151 IHC-P Image**

IHC-P analysis of 4% PFA fixed kidney and lung tissue sections from LPS exposed mouse using GTX53151 Podoplanin antibody [10C3].



For full product information, images and publications, please visit our [website](#).