

TREM-2b antibody [5J46]

Cat. No. GTX53229

| | |
|--------------|----------------------|
| Host | Rat |
| Clonality | Monoclonal |
| Isotype | IgG2 |
| Applications | WB, ICC/IF, FCM, IHC |
| Reactivity | Mouse |

Package

50 µg

Applications

Application Note

*Optimal dilutions/concentrations should be determined by the researcher.

| Suggested dilution | Recommended dilution |
|--------------------|----------------------|
| WB | 1:500 - 1:1000 |
| ICC/IF | 1:50 - 1:100 |
| FCM | Assay dependent |
| IHC | 1:50 - 1:100 |

Not tested in other applications.

Calculated MW 25 kDa. ([Note](#))

Properties

| | |
|---------------|--|
| Form | Liquid |
| Buffer | PBS |
| Preservative | No preservatives |
| Storage | Store as concentrated solution. Centrifuge briefly prior to opening vial. For short-term storage (1-2 weeks), store at 4°C. For long-term storage, aliquot and store at -20°C or below. Avoid multiple freeze-thaw cycles. |
| Concentration | Batch dependent (Please refer to the vial label for the specific concentration.) |
| Immunogen | Mouse recombinant protein of the extracellular domain of TREM-2b |
| Purification | Protein A/G purified From tissue culture supernatant |
| Conjugation | Unconjugated |

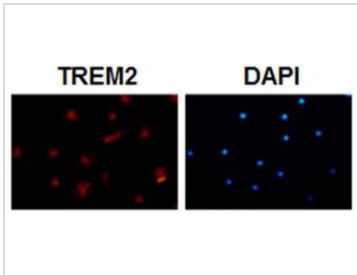


For full product information, images and publications, please visit our [website](#).

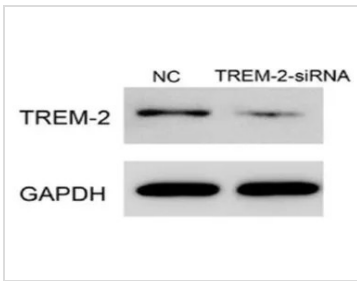
For laboratory research use only. Not for any clinical, therapeutic, or diagnostic use in humans or animals. Not for animal or human consumption.

Note

Purchasers shall not, and agree not to enable third parties to, analyze, copy, reverse engineer or otherwise attempt to determine the structure or sequence of the product.

DATA IMAGES

GTX53229 ICC/IF Image

ICC/IF analysis of mouse microglia cells using GTX53229 TREM-2b antibody [5J46].


GTX53229 WB Image

WB analysis of mouse microglia cells with or without TREM2 siRNA treatment using GTX53229 TREM-2b antibody [5J46].



For full product information, images and publications, please visit our [website](https://www.genetex.com).