

GITRL antibody [12D23]

Cat. No. GTX53355

Host	Rat
Clonality	Monoclonal
Isotype	IgG2
Applications	WB, ELISA, Neutralizing /Inhibition
Reactivity	Mouse

Package
100 µg

Applications

Application Note

*Optimal dilutions/concentrations should be determined by the researcher.

Suggested dilution	Recommended dilution
WB	Assay dependent
ELISA	1:1000 - 1:2000
Neutralizing /Inhibition	Assay dependent

Not tested in other applications.

Calculated MW 20 kDa. ([Note](#))

Properties

Form	Liquid
Buffer	PBS
Preservative	No preservatives
Storage	Store as concentrated solution. Centrifuge briefly prior to opening vial. For short-term storage (1-2 weeks), store at 4°C. For long-term storage, aliquot and store at -20°C or below. Avoid multiple freeze-thaw cycles.
Concentration	200 µg/ml (Please refer to the vial label for the specific concentration.)
Immunogen	Mouse recombinant protein TNFSF18
Purification	Protein G purified From tissue culture supernatant
Conjugation	Unconjugated

Note

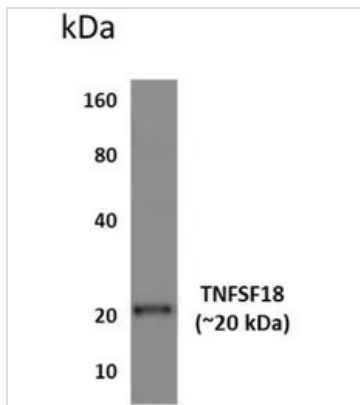
For laboratory research use only. Not for any clinical, therapeutic, or diagnostic use in humans or animals. Not for animal or human consumption.

Purchasers shall not, and agree not to enable third parties to, analyze, copy, reverse engineer or otherwise attempt to determine the structure or sequence of the product.



For full product information, images and publications, please visit our [website](#).

DATA IMAGES

**GTX53355 WB Image**

WB analysis of BaF3 cell lysate using GTX53355 GITRL antibody [12D23].



For full product information, images and publications, please visit our [website](#).