

PLGF antibody [9G33]

Cat. No. GTX53460

Host	Rat
Clonality	Monoclonal
Isotype	IgG2a
Applications	WB, Neutralizing/Inhibition
Reactivity	Mouse

Package
100 µg

Applications

Application Note

*Optimal dilutions/concentrations should be determined by the researcher.

Suggested dilution	Recommended dilution
WB	Assay dependent
Neutralizing/Inhibition	Assay dependent

Note : Blocking PLGF2 induced VEGFR1 phosphorylation in endothelial cells

Not tested in other applications.

Calculated MW 18 kDa. ([Note](#))

Properties

Form	Liquid
Buffer	PBS
Preservative	No preservatives
Storage	Store as concentrated solution. Centrifuge briefly prior to opening vial. For short-term storage (1-2 weeks), store at 4°C. For long-term storage, aliquot and store at -20°C or below. Avoid multiple freeze-thaw cycles.
Concentration	Batch dependent (Please refer to the vial label for the specific concentration.)
Immunogen	Mouse recombinant PLGF2 protein
Purification	Purified by affinity chromatography From tissue culture supernatant
Conjugation	Unconjugated

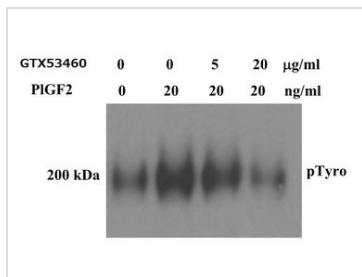
Note

For laboratory research use only. Not for any clinical, therapeutic, or diagnostic use in humans or animals. Not for animal or human consumption.

Purchasers shall not, and agree not to enable third parties to, analyze, copy, reverse engineer or otherwise attempt to determine the structure or sequence of the product.



For full product information, images and publications, please visit our [website](#).

DATA IMAGES

GTX53460 Neutralizing/Inhibition Image

Neutralizing/Blocking assay analysis of mouse skin endothelial cells (SENDs) were treated with or without PLGF2 (20ng/ml) in the absence or presence of 5 or 20 μg/ml GTX53460 PLGF antibody [9G33] for 30 mins. Phospho-VEGFR1 was detected with IP-Western for pTyrosine.



For full product information, images and publications, please visit our [website](https://www.genetex.com).