

VEGF Receptor 1 antibody [8F12]

Cat. No. GTX53466

Host	Mouse
Clonality	Monoclonal
Isotype	IgG1
Application	WB, Activation
Reactivity	Human

Package
100 µg

APPLICATION

Application Note

*Optimal dilutions/concentrations should be determined by the researcher.

Suggested dilution	Recommended dilution
WB	Assay dependent
Activation	Assay dependent

Note : This antibody can induce hVEGFR2 phosphorylation in HUVECs at > 2.0 µg/mL.

Not tested in other applications.

Calculated MW	151 kDa. (Note)
Product Note	This antibody recognizes hVEGFR-1 in western blot. It shows no cross-reactivity with hVEGFR-2.

PROPERTIES

Form	Liquid
Buffer	PBS
Preservative	No preservative
Storage	Store as concentrated solution. Centrifuge briefly prior to opening vial. For short-term storage (1-2 weeks), store at 4°C. For long-term storage, aliquot and store at -20°C or below. Avoid multiple freeze-thaw cycles.
Concentration	Batch dependent (Please refer to the vial label for the specific concentration.)
Immunogen	hVEGFR1 N-terminal fragment (N25-250)
Purification	Purified by affinity chromatography From tissue culture supernatant
Conjugation	Unconjugated



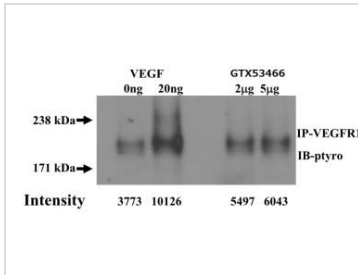
For full product information, images and publications, please visit our [website](#).

Date 2024 / 04 / 16 Page 1 of 2

For laboratory research use only. Not for any clinical, therapeutic, or diagnostic use in humans or animals. Not for animal or human consumption.

Note

Purchasers shall not, and agree not to enable third parties to, analyze, copy, reverse engineer or otherwise attempt to determine the structure or sequence of the product.

DATA IMAGES

GTX53466 Activation Image

Activation assay analysis of HUVECs stimulated with 20ng/ml VEGF or treated with 2.0 and 5.0 µg/ml GTX53466 VEGF Receptor 1 antibody [8F12] (10mins). The phospho-VEGFR1 was detected with IP-Western for p-Tyrosine.



For full product information, images and publications, please visit our [website](https://www.genetex.com).