

IL17E antibody [68C1039.2]

Cat. No. GTX53468

Host	Mouse
Clonality	Monoclonal
Isotype	IgG1
Application	WB, IHC-P
Reactivity	Human, Mouse

Package
100 µg

APPLICATION

Application Note

*Optimal dilutions/concentrations should be determined by the researcher.

Suggested dilution	Recommended dilution
WB	1:100 - 1:250
IHC-P	1:100 - 1:500

Not tested in other applications.

Calculated MW 20 kDa. ([Note](#))

PROPERTIES

Form	Liquid
Buffer	PBS
Preservative	0.05% Sodium azide
Storage	Store as concentrated solution. Centrifuge briefly prior to opening vial. For short-term storage (1-2 weeks), store at 4°C. For long-term storage, aliquot and store at -20°C or below. Avoid multiple freeze-thaw cycles.
Concentration	1 mg/ml (Please refer to the vial label for the specific concentration.)
Immunogen	Amino acids 115-132 of human IL-17E (isoform CRA_a) were used as immunogen for this antibody.
Purification	Protein G purified
Conjugation	Unconjugated

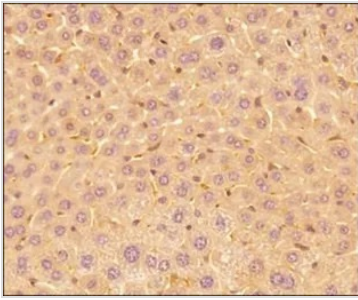
Note

For laboratory research use only. Not for any clinical, therapeutic, or diagnostic use in humans or animals. Not for animal or human consumption.

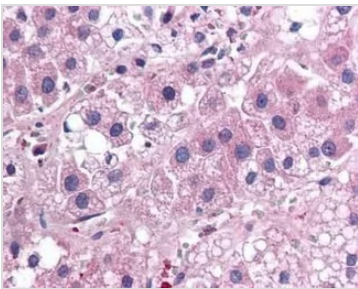
Purchasers shall not, and agree not to enable third parties to, analyze, copy, reverse engineer or otherwise attempt to determine the structure or sequence of the product.



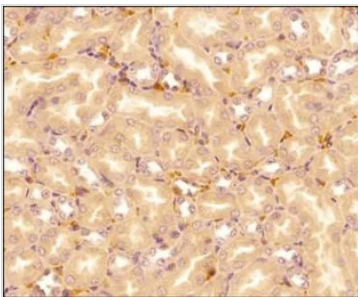
For full product information, images and publications, please visit our [website](#).

DATA IMAGES

GTX53468 IHC-P Image

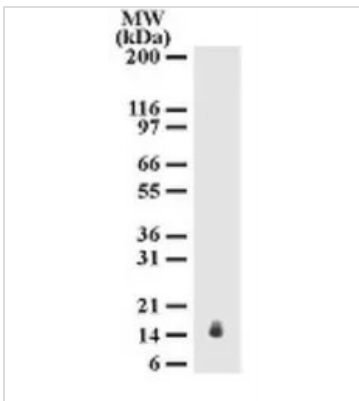
IHC-P analysis of mouse liver tissue using GTX53468 IL17E antibody [68C1039.2].
Dilution : 1:150


GTX53468 IHC-P Image

IHC-P analysis of human adrenal cortex tissue using GTX53468 IL17E antibody [68C1039.2].


GTX53468 IHC-P Image

IHC-P analysis of mouse kidney tissue using GTX53468 IL17E antibody [68C1039.2].
Dilution : 1:150


GTX53468 WB Image

WB analysis of mouse testis tissue using GTX53468 IL17E antibody [68C1039.2].
Dilution : 2 µg/ml



For full product information, images and publications, please visit our [website](https://www.genetex.com).