

Cav alpha 2/delta 2 antibody

Cat. No. GTX53487

Host	Rabbit
Clonality	Polyclonal
Isotype	IgG
Applications	WB, ICC/IF, IHC-P
Reactivity	Human, Mouse

Package
400 µl

Applications

Application Note

*Optimal dilutions/concentrations should be determined by the researcher.

Suggested dilution	Recommended dilution
WB	1:2000
ICC/IF	1:10-1:50
IHC-P	1:10-1:50

Not tested in other applications.

Calculated MW 130 kDa. ([Note](#))

Properties

Form	Liquid
Buffer	PBS
Preservative	0.09% Sodium azide
Storage	Store as concentrated solution. Centrifuge briefly prior to opening vial. For short-term storage (1-2 weeks), store at 4°C. For long-term storage, aliquot and store at -20°C or below. Avoid multiple freeze-thaw cycles.
Concentration	Batch dependent (Please refer to the vial label for the specific concentration.)
Immunogen	KLH conjugated synthetic peptide between 643-671 amino acids from the Central region of human CACNA2D2.
Purification	Protein A purified, followed by peptide affinity purification.
Conjugation	Unconjugated

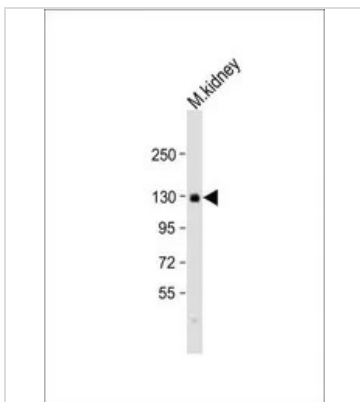
Note

For laboratory research use only. Not for any clinical, therapeutic, or diagnostic use in humans or animals. Not for animal or human consumption.

Purchasers shall not, and agree not to enable third parties to, analyze, copy, reverse engineer or otherwise attempt to determine the structure or sequence of the product.



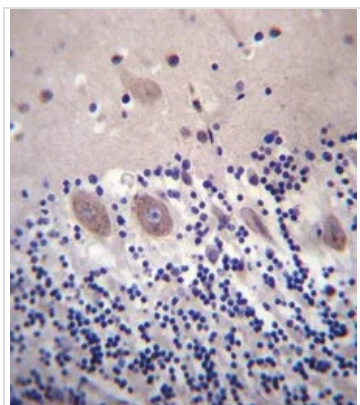
For full product information, images and publications, please visit our [website](#).

DATA IMAGES

GTX53487 WB Image

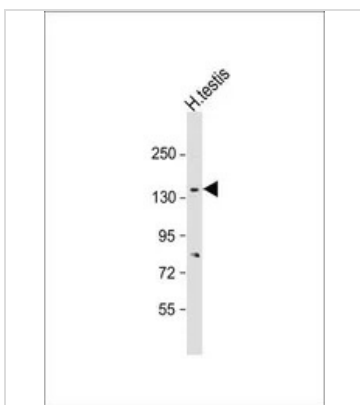
WB analysis of mouse kidney lysate using GTX53487 Cav alpha 2/delta 2 antibody.

Loading : 20 µg per lane

Dilution : 1:2000


GTX53487 IHC-P Image

IHC-P analysis of human cerebellum tissue using GTX53487 Cav alpha 2/delta 2 antibody.


GTX53487 WB Image

WB analysis of human testis lysate using GTX53487 Cav alpha 2/delta 2 antibody.

Loading : 20 µg per lane

Dilution : 1:2000



For full product information, images and publications, please visit our [website](https://www.genetex.com).