

Casein Kinase I gamma 3 antibody

Cat. No. GTX53489

| | |
|--------------|----------------|
| Host | Rabbit |
| Clonality | Polyclonal |
| Isotype | IgG |
| Applications | WB, IHC-P, FCM |
| Reactivity | Mouse |

Package
400 µl

Applications

Application Note

*Optimal dilutions/concentrations should be determined by the researcher.

| Suggested dilution | Recommended dilution |
|--------------------|----------------------|
| WB | 1:1000 |
| IHC-P | 1:10-1:50 |
| FCM | 1:25 |

Not tested in other applications.

Calculated MW 49 kDa. ([Note](#))

Properties

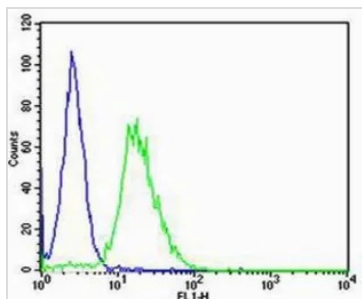
| | |
|---------------|----------------------------------------------------------------------------------------------------------------------------------------------------------------------------------------------------------------------------|
| Form | Liquid |
| Buffer | PBS |
| Preservative | 0.09% Sodium azide |
| Storage | Store as concentrated solution. Centrifuge briefly prior to opening vial. For short-term storage (1-2 weeks), store at 4°C. For long-term storage, aliquot and store at -20°C or below. Avoid multiple freeze-thaw cycles. |
| Concentration | Batch dependent (Please refer to the vial label for the specific concentration.) |
| Immunogen | KLH conjugated synthetic peptide between 333-361 amino acids from the C-terminal region of mouse Csnk1g3. |
| Purification | Protein A purified, followed by peptide affinity purification. |
| Conjugation | Unconjugated |

Note

For laboratory research use only. Not for any clinical, therapeutic, or diagnostic use in humans or animals. Not for animal or human consumption.

Purchasers shall not, and agree not to enable third parties to, analyze, copy, reverse engineer or otherwise attempt to determine the structure or sequence of the product.

For full product information, images and publications, please visit our [website](#).

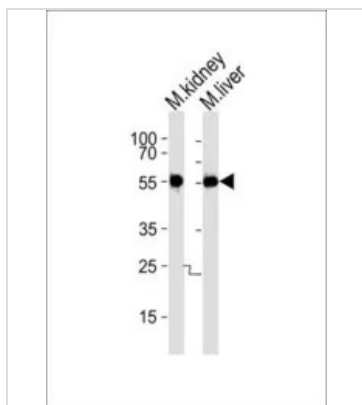
DATA IMAGES

GTX53489 FCM Image

FACS analysis of NIH3T3 cells using GTX53489 Casein Kinase I gamma 3 antibody.

Green : Casein Kinase I gamma 3

Blue : Isotype control

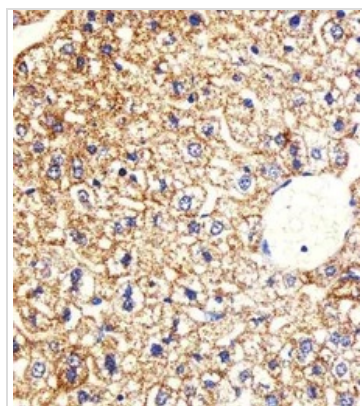
Dilution : 1:25


GTX53489 WB Image

WB analysis of mouse kidney and liver tissue lysate using GTX53489 Casein Kinase I gamma 3 antibody.

Loading : 35ug per lane

Dilution : 1:1000


GTX53489 IHC-P Image

IHC-P analysis of mouse liver tissue using GTX53489 Casein Kinase I gamma 3 antibody.

Dilution : 1:25



For full product information, images and publications, please visit our [website](https://www.genetex.com).