

## Exonuclease 5 antibody

**Cat. No. GTX53538**

<b>Host</b>	Rabbit
<b>Clonality</b>	Polyclonal
<b>Isotype</b>	IgG
<b>Applications</b>	WB, FCM
<b>Reactivity</b>	Human, Mouse, Hamster

**Package**  
400 µl

## Applications

**Application Note**

\*Optimal dilutions/concentrations should be determined by the researcher.

Suggested dilution	Recommended dilution
WB	1:1000
FCM	1:10-1:50

Not tested in other applications.

**Calculated MW** 42 kDa. ([Note](#))

## Properties

<b>Form</b>	Liquid
<b>Buffer</b>	PBS
<b>Preservative</b>	0.09% Sodium azide
<b>Storage</b>	Store as concentrated solution. Centrifuge briefly prior to opening vial. For short-term storage (1-2 weeks), store at 4°C. For long-term storage, aliquot and store at -20°C or below. Avoid multiple freeze-thaw cycles.
<b>Concentration</b>	Batch dependent (Please refer to the vial label for the specific concentration.)
<b>Immunogen</b>	KLH conjugated synthetic peptide between 166-193 amino acids from the Central region of human DEM1.
<b>Purification</b>	Protein A purified, followed by peptide affinity purification.
<b>Conjugation</b>	Unconjugated

**Note**

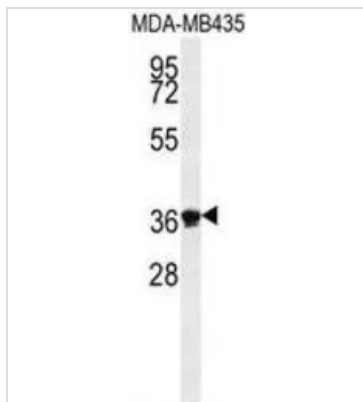
For laboratory research use only. Not for any clinical, therapeutic, or diagnostic use in humans or animals. Not for animal or human consumption.

Purchasers shall not, and agree not to enable third parties to, analyze, copy, reverse engineer or otherwise attempt to determine the structure or sequence of the product.



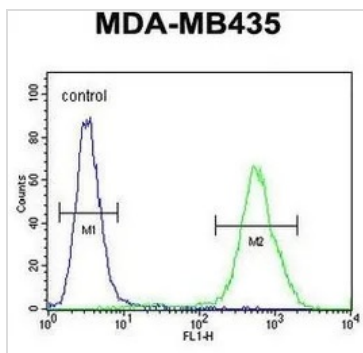
For full product information, images and publications, please visit our [website](#).

DATA IMAGES



**GTX53538 WB Image**

WB analysis of MDA-MB435 cell lysate (35ug/lane) using GTX53538 Exonuclease 5 antibody.

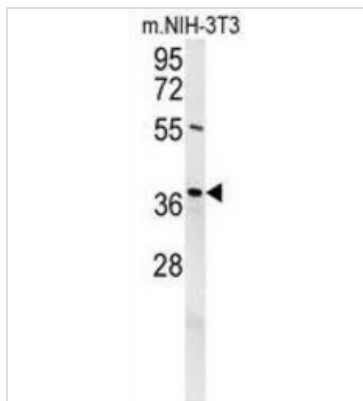


**GTX53538 FCM Image**

FACS analysis of MDA-MB435 cells using GTX53538 Exonuclease 5 antibody.

Green : primary antibody

Blue : negative control



**GTX53538 WB Image**

WB analysis of NIH-3T3 cell lysate (35ug/lane) using GTX53538 Exonuclease 5 antibody.



For full product information, images and publications, please visit our [website](#).