

## HtrA1 antibody

Cat. No. GTX53558

Host	Rabbit
Clonality	Polyclonal
Isotype	IgG
Applications	WB, ICC/IF, IHC-P
Reactivity	Human, Mouse

References ( 1 )

Package

200 µl

## Applications

## Application Note

\*Optimal dilutions/concentrations should be determined by the researcher.

Suggested dilution	Recommended dilution
WB	1:2000
ICC/IF	1:10-1:50
IHC-P	1:10-1:50

Not tested in other applications.

Calculated MW 51 kDa. ( [Note](#) )

## Properties

Form	Liquid
Buffer	PBS
Preservative	0.09% Sodium azide
Storage	Store as concentrated solution. Centrifuge briefly prior to opening vial. For short-term storage (1-2 weeks), store at 4°C. For long-term storage, aliquot and store at -20°C or below. Avoid multiple freeze-thaw cycles.
Concentration	Batch dependent (Please refer to the vial label for the specific concentration.)
Immunogen	KLH conjugated synthetic peptide between 116-147 amino acids from the N-terminal region of human HtrA1.
Purification	Saturated Ammonium Sulfate (SAS) precipitation followed by dialysis against PBS.
Conjugation	Unconjugated

## Note

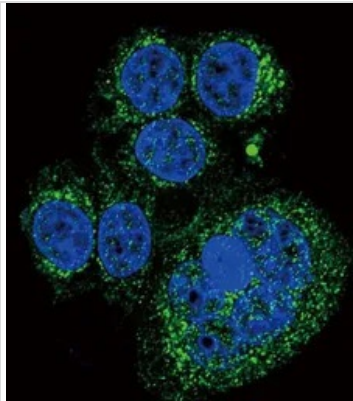
For laboratory research use only. Not for any clinical, therapeutic, or diagnostic use in humans or animals. Not for animal or human consumption.

Purchasers shall not, and agree not to enable third parties to, analyze, copy, reverse engineer or otherwise attempt to determine the structure or sequence of the product.



For full product information, images and publications, please visit our [website](#).

## DATA IMAGES

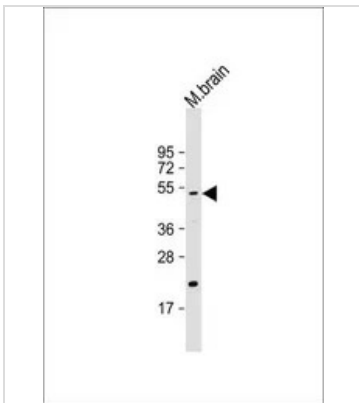


### GTX53558 ICC/IF Image

ICC/IF analysis of HeLa cells using GTX53558 HtrA1 antibody.

Green : HtrA1

Blue : DAPI

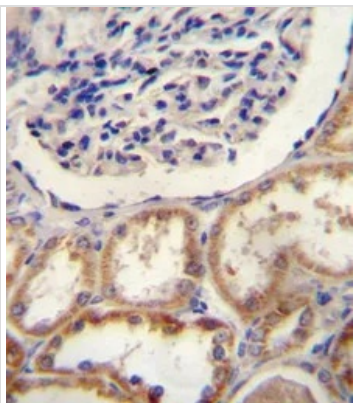


### GTX53558 WB Image

WB analysis of mouse brain lysate using GTX53558 HtrA1 antibody.

Loading : 20 µg per lane

Dilution : 1:2000



### GTX53558 IHC-P Image

IHC-P analysis of human kidney tissue using GTX53558 HtrA1 antibody.



For full product information, images and publications, please visit our [website](#).