

IKK beta (phospho Ser701) antibody

Cat. No. GTX53668

Host	Rabbit
Clonality	Polyclonal
Isotype	IgG
Applications	Dot
Reactivity	Mouse

Package
400 µl

Applications

Application Note

*Optimal dilutions/concentrations should be determined by the researcher.

Suggested dilution	Recommended dilution
Dot	1:500

Not tested in other applications.

Properties

Form	Liquid
Buffer	PBS
Preservative	0.09% Sodium azide
Storage	Store as concentrated solution. Centrifuge briefly prior to opening vial. For short-term storage (1-2 weeks), store at 4°C. For long-term storage, aliquot and store at -20°C or below. Avoid multiple freeze-thaw cycles.
Concentration	Batch dependent (Please refer to the vial label for the specific concentration.)
Immunogen	KLH conjugated synthetic phosphopeptide corresponding to amino acid residues surrounding S701 of mouse IKKB.
Purification	Protein A purified, followed by peptide affinity purification.
Conjugation	Unconjugated

Note

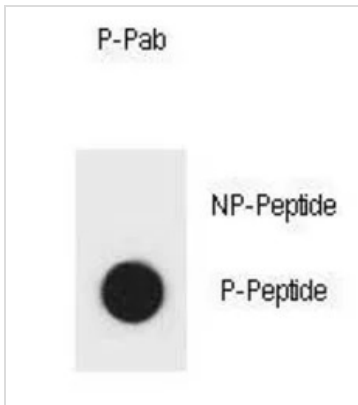
For laboratory research use only. Not for any clinical, therapeutic, or diagnostic use in humans or animals. Not for animal or human consumption.

Purchasers shall not, and agree not to enable third parties to, analyze, copy, reverse engineer or otherwise attempt to determine the structure or sequence of the product.



For full product information, images and publications, please visit our [website](#).

DATA IMAGES

**GTX53668 Dot Image**

Dot Blot analysis of IKK beta phospho- or Non phospho-peptide using GTX53668 IKK beta (phospho Ser701) antibody. 50ng of Phospho-peptide or Non phospho-peptide per dot were adsorbed.

Dilution : 0.6µg/ml



For full product information, images and publications, please visit our [website](#).