

## CRLF2 antibody [AT4E7]

**Cat. No. GTX53705**

<b>Host</b>	Mouse
<b>Clonality</b>	Monoclonal
<b>Isotype</b>	IgG2a
<b>Applications</b>	WB, ELISA
<b>Reactivity</b>	Human

**Package**  
100 µl

## Applications

**Application Note**

The antibody has been tested by ELISA, Western blot analysis to assure specificity and reactivity. Since application varies, however, each investigation should be titrated by the reagent to obtain optimal results. Recommended dilution range for Western blot analysis is 1:500 ~ 1:5000. Recommended starting dilution is 1:1000.

**Calculated MW** 42 kDa. ([Note](#))

## Properties

<b>Form</b>	Liquid
<b>Buffer</b>	PBS, 10% Glycerol
<b>Preservative</b>	0.02% Sodium azide
<b>Storage</b>	Store as concentrated solution. Centrifuge briefly prior to opening vial. For short-term storage (1-2 weeks), store at 4°C. For long-term storage, aliquot and store at -20°C or below. Avoid multiple freeze-thaw cycles.
<b>Concentration</b>	1 mg/ml (Please refer to the vial label for the specific concentration.)
<b>Immunogen</b>	Recombinant human CRLF2 (23-231aa) purified from E. coli
<b>Purification</b>	By protein-A affinity chromatography
<b>Conjugation</b>	Unconjugated

**Note**

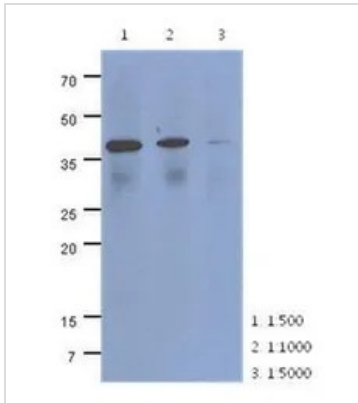
For laboratory research use only. Not for any clinical, therapeutic, or diagnostic use in humans or animals. Not for animal or human consumption.

Purchasers shall not, and agree not to enable third parties to, analyze, copy, reverse engineer or otherwise attempt to determine the structure or sequence of the product.



For full product information, images and publications, please visit our [website](#).

## DATA IMAGES

**GTX53705 WB Image**

WB analysis of HeLa lysate (40ug) using CRLF2 antibody at the indicated dilution.



For full product information, images and publications, please visit our [website](#).