

C Reactive Protein antibody [5A9]

Cat. No. GTX53706

Host	Mouse
Clonality	Monoclonal
Isotype	IgG2a
Application	WB, ELISA
Reactivity	Human, Mouse

Package
100 µl

APPLICATION

Application Note

The antibody has been tested by ELISA and Western blot analysis to assure specificity and reactivity. Since application varies, however, each investigation should be titrated by the reagent to obtain optimal results. Recommended dilution range for Western blot analysis is 1:1,000 ~ 2,000. Recommended starting dilution is 1:1,000.

Calculated MW 25 kDa. ([Note](#))

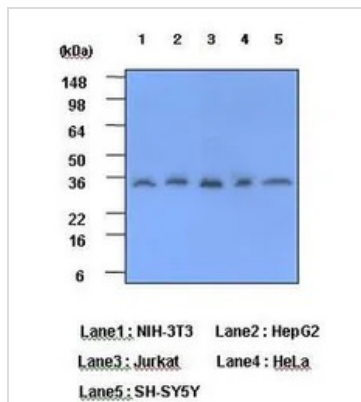
PROPERTIES

Form	Liquid
Buffer	PBS
Preservative	0.1% Sodium azide
Storage	Store as concentrated solution. Centrifuge briefly prior to opening vial. For short-term storage (1-2 weeks), store at 4°C. For long-term storage, aliquot and store at -20°C or below. Avoid multiple freeze-thaw cycles.
Concentration	1 mg/ml (Please refer to the vial label for the specific concentration.)
Immunogen	Recombinant human CRP (19-224aa) purified from E. coli
Purification	By protein-G affinity chromatography
Conjugation	Unconjugated
Note	For laboratory research use only. Not for any clinical, therapeutic, or diagnostic use in humans or animals. Not for animal or human consumption. Purchasers shall not, and agree not to enable third parties to, analyze, copy, reverse engineer or otherwise attempt to determine the structure or sequence of the product.



For full product information, images and publications, please visit our [website](#).

DATA IMAGES



GTX53706 WB Image

WB analysis of (1) NIH-3T3, (2) HepG2, (3) Jurkat, (4) HeLa and (5) SH-SY5Y lysates (40ug per lane) using CRP antibody at a dilution of 1:1,000.



For full product information, images and publications, please visit our [website](https://www.genetex.com).