

# SARS-CoV-2 Membrane Protein Proximity Ligation Assay (PLA) Kit (Cy3)

**Cat. No. GTX537371-23**

## Applications

PLA

## Reactivity

SARS Coronavirus 2

## Package

5 test

## PRODUCT

## Content

Item	Name	Quantity	Storage
A1	Blocking Solution, 10 mL	2 bottles	-20 °C
A2	Antibody (Ab)-Oligo A, 40 µL	1 tube	-20 °C
A3	Antibody (Ab)-Oligo B, 40 µL	1 tube	-20 °C
A4	Ligase (400 U/µL), 10 µL	1 tube	-20 °C
A5	5x Ligation Solution, 500 µL	1 tube	-20 °C
A6	Polymerase (10 U/µL), 10 µL	1 tube	-20 °C
A7	5x Amplification Solution, 500 µL	1 tube	-20 °C
A8	Detection Probe (Cy3), 50 µL	1 tube	-20 °C
B1	10x Probe Solution, 200 µL	1 tube	4°C or below
B2	20x Wash Buffer, 50 mL	2 bottles	4°C or below

## Summary

The SARS-CoV-2 Membrane Protein Proximity Ligation Assay (PLA) Kit (Cy3) enables the detection of SARS-CoV-2 membrane protein in virus-infected tissue or infected/transfected cell block samples. The viral membrane protein is detected using two oligonucleotide-conjugated primary antibodies, called PLA probes. Only when both PLA probes bind to the membrane protein can the assay generate an amplified signal. This provides researchers with a highly specific and sensitive diagnostic tool.

## Applications

## Application Note

Please see the protocol for detailed procedure.

## Product Note

This PLA kit detects SARS-CoV-2 membrane protein.

## Properties

### Form

Liquid

### Storage

Individual components are stored at -20°C or 4°C as indicated.



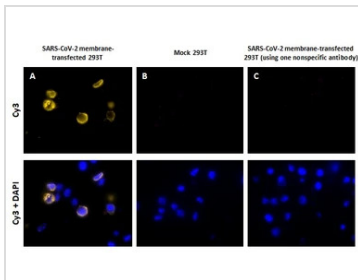
For full product information, images and publications, please visit our [website](#).

**Conjugation**

Cyanine3 (Cy3) [Wavelength](#)
**Note**

For laboratory research use only. Not for any clinical, therapeutic, or diagnostic use in humans or animals. Not for animal or human consumption.

Purchasers shall not, and agree not to enable third parties to, analyze, copy, reverse engineer or otherwise attempt to determine the structure or sequence of the product.

**DATA IMAGES**

**GTx537371-23 PLA Image**

Detection of SARS-CoV-2 (COVID-19) membrane protein in a transfected HEK293T cell FFPE Cell Pellet Block (GTx435640) section using the SARS-CoV-2 Membrane Protein Proximity Ligation Assay Kit (Cy3) (GTx537371-23). PLA signals appear yellow and nuclei are blue.

A) Positive PLA reaction in transfected HEK293T cells.

B) Negative control with mock-transfected HEK293T cells.

C) Negative control using one non-specific PLA antibody probe in transfected HEK293T cells.


**GTx537371-23 Image**


For full product information, images and publications, please visit our [website](#).