

# CLEC4E antibody [AT16E3]

**Cat. No. GTX53742**

<b>Host</b>	Mouse
<b>Clonality</b>	Monoclonal
<b>Isotype</b>	IgG2b
<b>Applications</b>	WB, ICC/IF, IHC-P, FCM, ELISA
<b>Reactivity</b>	Human

References ( 1 )

Package

100 µl

## Applications

### Application Note

The antibody has been tested by ELISA, Western blot and Immunofluorescence analysis to assure specificity and reactivity. Since application varies, however, each investigation should be titrated by the reagent to obtain optimal results. Recommended dilution range for Western blot analysis and Immunofluorescence is 1:250 ~ 500. Recommended starting dilution is 1:250

**Calculated MW** 25 kDa. ( [Note](#) )

## Properties

<b>Form</b>	Liquid
<b>Buffer</b>	PBS
<b>Preservative</b>	0.1% Sodium azide
<b>Storage</b>	Store as concentrated solution. Centrifuge briefly prior to opening vial. For short-term storage (1-2 weeks), store at 4°C. For long-term storage, aliquot and store at -20°C or below. Avoid multiple freeze-thaw cycles.
<b>Concentration</b>	1 mg/ml (Please refer to the vial label for the specific concentration.)
<b>Immunogen</b>	Recombinant human CLEC4E (41-219aa) purified from E.coli
<b>Purification</b>	By protein-G affinity chromatography
<b>Conjugation</b>	Unconjugated

### Note

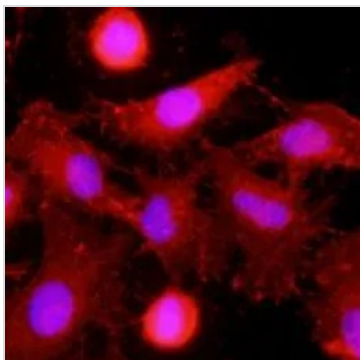
For laboratory research use only. Not for any clinical, therapeutic, or diagnostic use in humans or animals. Not for animal or human consumption.

Purchasers shall not, and agree not to enable third parties to, analyze, copy, reverse engineer or otherwise attempt to determine the structure or sequence of the product.



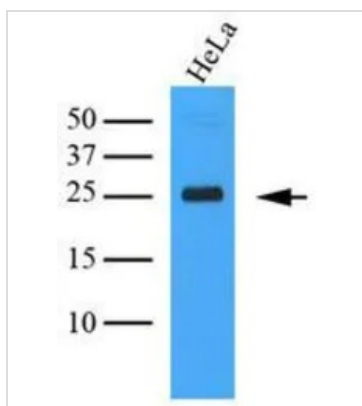
For full product information, images and publications, please visit our [website](#).

## DATA IMAGES



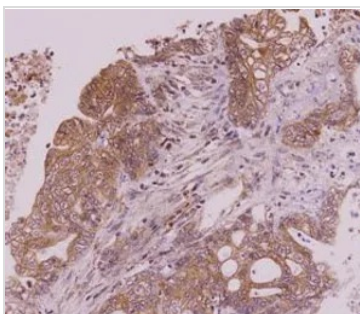
### GTX53742 ICC/IF Image

ICC/IF analysis of HeLa cells using MINCLE antibody at a dilution of 1:500 (Red). Nuclei were stained by Hoechst 33342 (blue).



### GTX53742 WB Image

WB analysis of HeLa lysate (35ug) using MINCLE antibody at a dilution of 1:1,000.



### GTX53742 IHC-P Image

IHC-P analysis of colorectal cancer tissue using MINCLE antibody at a dilution of 1:50.



For full product information, images and publications, please visit our [website](https://www.genetex.com).