

STEAP1 antibody [J2D2]

Cat. No. GTX53786

Host	Mouse
Clonality	Monoclonal
Isotype	IgG2b
Applications	WB, ICC/IF, IHC-P, ELISA
Reactivity	Human, Rat

Package
100 µl

Applications

Application Note

The antibody has been tested by ELISA, Western blot, immunofluorescence and immunohistochemistry analysis to assure specificity and reactivity. Since application varies, however, each investigation should be titrated by the reagent to obtain optimal results. Recommended dilution range for Western blot is 1:1,000~1:2,000, immunofluorescence 1:100 ~ 1:300 and immunohistochemistry analysis is 1:50~100. Recommended starting dilution for Western blot is 1:1,000, Immunofluorescence 1:100 and Immunohistochemistry analysis is 1:50.

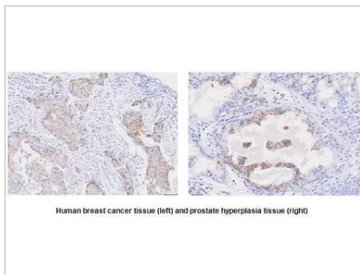
Calculated MW 40 kDa. ([Note](#))

Properties

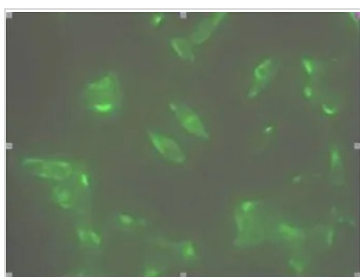
Form	Liquid
Buffer	PBS
Preservative	0.1% Sodium azide
Storage	Store as concentrated solution. Centrifuge briefly prior to opening vial. For short-term storage (1-2 weeks), store at 4°C. For long-term storage, aliquot and store at -20°C or below. Avoid multiple freeze-thaw cycles.
Concentration	1 mg/ml (Please refer to the vial label for the specific concentration.)
Immunogen	Recombinant human STEAP1 (1-70aa) purified from E. coli
Purification	By protein-G affinity chromatography
Conjugation	Unconjugated
Note	For laboratory research use only. Not for any clinical, therapeutic, or diagnostic use in humans or animals. Not for animal or human consumption. Purchasers shall not, and agree not to enable third parties to, analyze, copy, reverse engineer or otherwise attempt to determine the structure or sequence of the product.



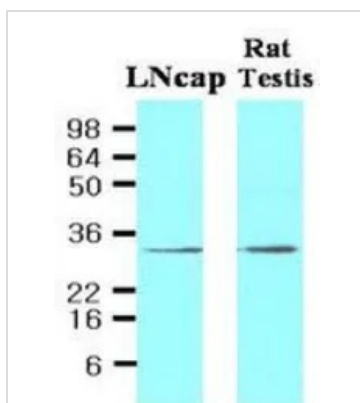
For full product information, images and publications, please visit our [website](#).

DATA IMAGES

GTX53786 IHC-P Image

IHC-P analysis of human breast cancer and prostate hyperplasia tissue using STEAP1 antibody at a dilution of 1:50.


GTX53786 ICC/IF Image

ICC/IF analysis of human LNCap cells using STEAP1 antibody.


GTX53786 WB Image

WB analysis of LNCap and Rat testis lysates (30ug per lane) using STEAP1 antibody at a dilution of 1:500.



For full product information, images and publications, please visit our [website](#).