

UBE2L6 antibody [k1H3]

Cat. No. GTX53796

Host	Mouse
Clonality	Monoclonal
Isotype	IgG2b
Applications	WB, IHC-P, ELISA
Reactivity	Human

Package
100 µl

Applications

Application Note

The antibody has been tested by ELISA, Western blot and immunohistochemistry analysis to assure specificity and reactivity. Since application varies, however, each investigation should be titrated by the reagent to obtain optimal results. Recommended dilution range for Western blot is 1:1,000~1:3,000 and immunohistochemistry analysis is 1:50~100. Recommended starting dilution for Western blot is 1:2,000 and Immunohistochemistry is 1:50.

Calculated MW 18 kDa. ([Note](#))

Properties

Form	Liquid
Buffer	PBS
Preservative	0.1% Sodium azide
Storage	Store as concentrated solution. Centrifuge briefly prior to opening vial. For short-term storage (1-2 weeks), store at 4°C. For long-term storage, aliquot and store at -20°C or below. Avoid multiple freeze-thaw cycles.
Concentration	1 mg/ml (Please refer to the vial label for the specific concentration.)
Immunogen	Recombinant human UBE2L6 (1-152aa) purified from E. coli
Purification	By protein-G affinity chromatography
Conjugation	Unconjugated

Note

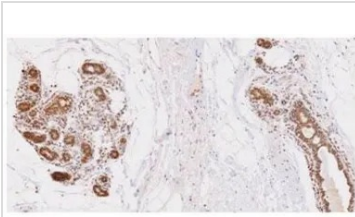
For laboratory research use only. Not for any clinical, therapeutic, or diagnostic use in humans or animals. Not for animal or human consumption.

Purchasers shall not, and agree not to enable third parties to, analyze, copy, reverse engineer or otherwise attempt to determine the structure or sequence of the product.



For full product information, images and publications, please visit our [website](#).

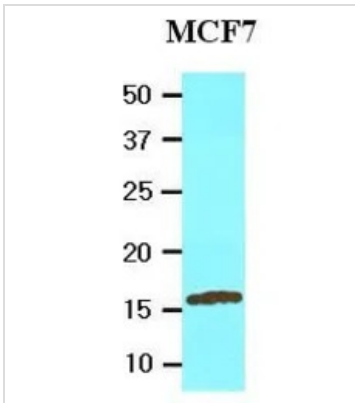
DATA IMAGES



Human breast lobule tissue

GTX53796 IHC-P Image

IHC-P analysis of human breast lobule tissue using UBE2L6 antibody at a dilution of 1:50.

**GTX53796 WB Image**

WB analysis of MCF7 lysate (20ug) using UBE2L6 antibody at a dilution of 1:2,000.



For full product information, images and publications, please visit our [website](#).