

Mannose Receptor antibody

Cat. No. GTX53806

Host	Rabbit
Clonality	Polyclonal
Isotype	IgG
Applications	IHC-P
Reactivity	Mouse, Rat, Pig

References (1)

Package

100 µg

Applications

Application Note

*Optimal dilutions/concentrations should be determined by the researcher.

Suggested dilution	Recommended dilution
IHC-P	1:100-500
Not tested in other applications.	

Observed MW (kDa) 160 kDa kDa.

Properties

Form	Liquid
Buffer	PBS
Preservative	0.02% Sodium azide
Storage	Store as concentrated solution. Centrifuge briefly prior to opening vial. For short-term storage (1-2 weeks), store at 4°C. For long-term storage, aliquot and store at -20°C or below. Avoid multiple freeze-thaw cycles.
Concentration	0.5 mg/ml (Please refer to the vial label for the specific concentration.)
Immunogen	KLH conjugated synthetic peptide derived from human CD206. Please contact us for the exact immunogen sequence.
Purification	Purified by antigen-affinity chromatography
Conjugation	Unconjugated

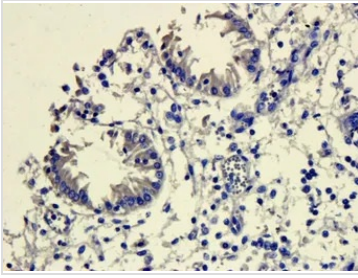
Note

For laboratory research use only. Not for any clinical, therapeutic, or diagnostic use in humans or animals. Not for animal or human consumption.

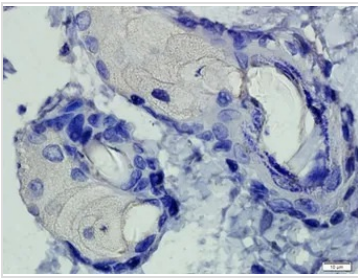
Purchasers shall not, and agree not to enable third parties to, analyze, copy, reverse engineer or otherwise attempt to determine the structure or sequence of the product.

For full product information, images and publications, please visit our [website](#).

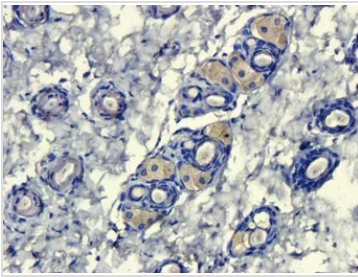
DATA IMAGES

**GTX53806 IHC-P Image**

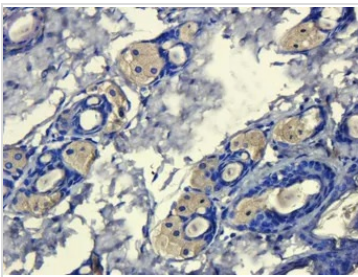
IHC-P analysis of pig large intestines tissue using GTX53806 Mannose Receptor antibody.
Dilution : 1:200

**GTX53806 IHC-P Image**

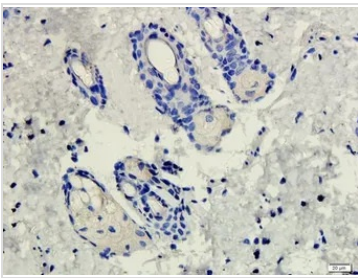
IHC-P analysis of rat skin tissue using GTX53806 Mannose Receptor antibody.
Dilution : 1:200

**GTX53806 IHC-P Image**

IHC-P analysis of mouse skin tissue using GTX53806 Mannose Receptor antibody.
Dilution : 1:200

**GTX53806 IHC-P Image**

IHC-P analysis of mouse skin tissue using GTX53806 Mannose Receptor antibody.
Dilution : 1:200

**GTX53806 IHC-P Image**

IHC-P analysis of rat skin tissue using GTX53806 Mannose Receptor antibody.
Dilution : 1:200



For full product information, images and publications, please visit our [website](#).