

hCG alpha antibody

Cat. No. GTX53936

Host	Rabbit
Clonality	Polyclonal
Isotype	IgG
Applications	WB
Reactivity	Human

Package
100 µl

Applications

Application Note

*Optimal dilutions/concentrations should be determined by the researcher.

Suggested dilution	Recommended dilution
WB	1:500 - 1:2000

Not tested in other applications.

Calculated MW 13 kDa. ([Note](#))**Product Note** It recognizes the alpha-chain of FSH, LH, TSH, and HCG.

Properties

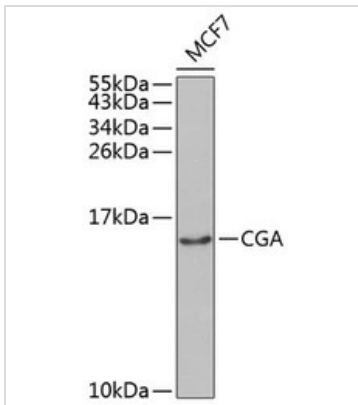
Form Liquid**Buffer** PBS, 50% Glycerol**Preservative** 0.02% Sodium azide**Storage** Store as concentrated solution. Centrifuge briefly prior to opening vial. For short-term storage (1-2 weeks), store at 4°C. For long-term storage, aliquot and store at -20°C or below. Avoid multiple freeze-thaw cycles.**Concentration** Batch dependent (Please refer to the vial label for the specific concentration.)**Immunogen** Recombinant fusion protein containing a sequence corresponding to amino acids 25-116 of human CGA (NP_000726.1).**Purification** Purified by affinity chromatography**Conjugation** Unconjugated**Note** For laboratory research use only. Not for any clinical, therapeutic, or diagnostic use in humans or animals. Not for animal or human consumption.

Purchasers shall not, and agree not to enable third parties to, analyze, copy, reverse engineer or otherwise attempt to determine the structure or sequence of the product.



For full product information, images and publications, please visit our [website](#).

DATA IMAGES

**GTX53936 WB Image**

WB analysis of MCF7 cell lysate using GTX53936 hCG alpha antibody.

Dilution : 1:1000

Loading : 25µg per lane



For full product information, images and publications, please visit our [website](#).