

# EIF6 antibody

**Cat. No. GTX54010**

<b>Host</b>	Rabbit
<b>Clonality</b>	Polyclonal
<b>Isotype</b>	IgG
<b>Application</b>	WB, ICC/IF
<b>Reactivity</b>	Human

**Package**  
100 µl

## APPLICATION

### Application Note

\*Optimal dilutions/concentrations should be determined by the researcher.

Suggested dilution	Recommended dilution
WB	1:500 - 1:2000
ICC/IF	1:50 - 1:200

Not tested in other applications.

**Calculated MW** 27 kDa. ( [Note](#) )

## PROPERTIES

<b>Form</b>	Liquid
<b>Buffer</b>	PBS, 50% Glycerol
<b>Preservative</b>	0.02% Sodium azide
<b>Storage</b>	Store as concentrated solution. Centrifuge briefly prior to opening vial. For short-term storage (1-2 weeks), store at 4°C. For long-term storage, aliquot and store at -20°C or below. Avoid multiple freeze-thaw cycles.
<b>Concentration</b>	Batch dependent (Please refer to the vial label for the specific concentration.)
<b>Immunogen</b>	Recombinant fusion protein containing a sequence corresponding to amino acids 1-245 of human EIF6 (NP_852133.1).
<b>Purification</b>	Purified by affinity chromatography
<b>Conjugation</b>	Unconjugated

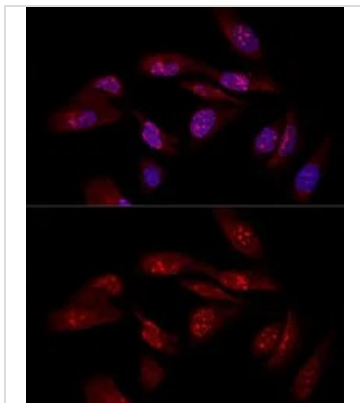
### Note

For laboratory research use only. Not for any clinical, therapeutic, or diagnostic use in humans or animals. Not for animal or human consumption.

Purchasers shall not, and agree not to enable third parties to, analyze, copy, reverse engineer or otherwise attempt to determine the structure or sequence of the product.



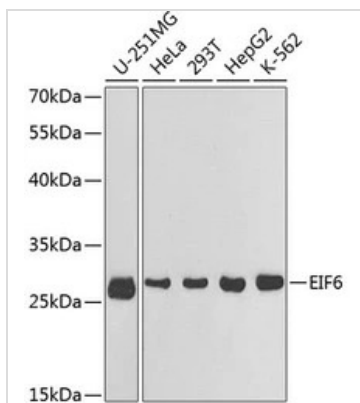
For full product information, images and publications, please visit our [website](#).

**DATA IMAGES**

**GTX54010 ICC/IF Image**

ICC/IF analysis of U2OS cells using GTX54010 EIF6 antibody.

Blue : DAPI

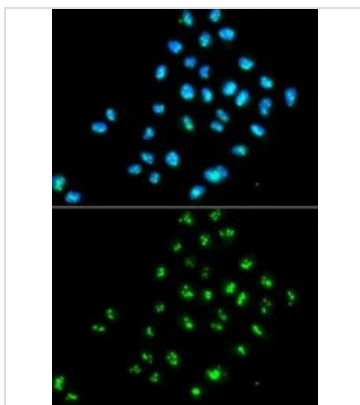
Dilution : 1:50


**GTX54010 WB Image**

WB analysis of various sample lysates using GTX54010 EIF6 antibody.

Dilution : 1:1000

Loading : 25µg per lane


**GTX54010 ICC/IF Image**

ICC/IF analysis of MCF7 cells using GTX54010 EIF6 antibody.

Blue : DAPI



For full product information, images and publications, please visit our [website](#).