

## ELAVL1 / HuR antibody

Cat. No. GTX54044

Host	Rabbit
Clonality	Polyclonal
Isotype	IgG
Applications	WB, ICC/IF, IHC-P
Reactivity	Human, Mouse, Rat

Package  
100 µl

## Applications

## Application Note

\*Optimal dilutions/concentrations should be determined by the researcher.

Suggested dilution	Recommended dilution
WB	1:500 - 1:2000
ICC/IF	1:50 - 1:200
IHC-P	1:100 - 1:200

Not tested in other applications.

Calculated MW 36 kDa. ( [Note](#) )

## Properties

Form	Liquid
Buffer	PBS, 50% Glycerol
Preservative	0.02% Sodium azide
Storage	Store as concentrated solution. Centrifuge briefly prior to opening vial. For short-term storage (1-2 weeks), store at 4°C. For long-term storage, aliquot and store at -20°C or below. Avoid multiple freeze-thaw cycles.
Concentration	Batch dependent (Please refer to the vial label for the specific concentration.)
Immunogen	Recombinant fusion protein containing a sequence corresponding to amino acids 1-326 of human ELAVL1 (NP_001410.2).
Purification	Purified by affinity chromatography
Conjugation	Unconjugated

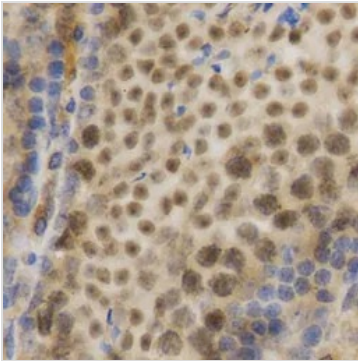
## Note

For laboratory research use only. Not for any clinical, therapeutic, or diagnostic use in humans or animals. Not for animal or human consumption.

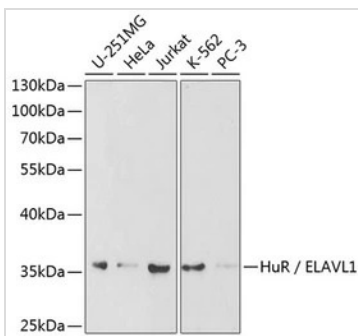
Purchasers shall not, and agree not to enable third parties to, analyze, copy, reverse engineer or otherwise attempt to determine the structure or sequence of the product.



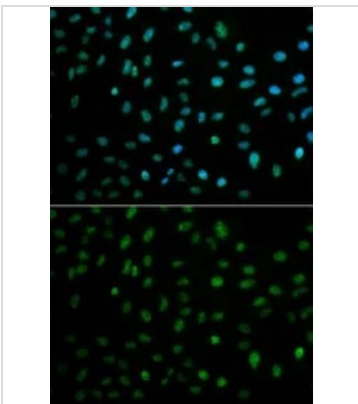
For full product information, images and publications, please visit our [website](#).

**DATA IMAGES**

**GTX54044 IHC-P Image**

IHC-P analysis of mouse testis tissue using GTX54044 ELAVL1 / HuR antibody.  
Dilution : 1:200


**GTX54044 WB Image**

WB analysis of various sample lysates using GTX54044 ELAVL1 / HuR antibody.  
Dilution : 1:1000  
Loading : 25µg per lane


**GTX54044 ICC/IF Image**

ICC/IF analysis of MCF7 cells using GTX54044 ELAVL1 / HuR antibody.  
Blue : DAPI



For full product information, images and publications, please visit our [website](#).