

# Hrk antibody

**Cat. No. GTX54049**

<b>Host</b>	Rabbit
<b>Clonality</b>	Polyclonal
<b>Isotype</b>	IgG
<b>Application</b>	WB
<b>Reactivity</b>	Human, Mouse, Rat

Reference ( 1 )

Package

100 µg

## APPLICATION

### Application Note

\*Optimal dilutions/concentrations should be determined by the researcher.

Suggested dilution	Recommended dilution
WB	2-5µg/ml

**Note : This antibody detects a band of approximately 13kDa in mouse pancreas tissue lysate.**

Not tested in other applications.

**Calculated MW** 10 kDa. ( [Note](#) )

## PROPERTIES

<b>Form</b>	Liquid
<b>Buffer</b>	PBS
<b>Preservative</b>	0.02% Sodium azide
<b>Storage</b>	Store as concentrated solution. Centrifuge briefly prior to opening vial. For short-term storage (1-2 weeks), store at 4°C. For long-term storage, aliquot and store at -20°C or below. Avoid multiple freeze-thaw cycles.
<b>Concentration</b>	1.0 mg/ml (Please refer to the vial label for the specific concentration.)
<b>Immunogen</b>	15 amino acid peptide from near the centre of human HRK (NP_003797).
<b>Purification</b>	Purified by affinity chromatography
<b>Conjugation</b>	Unconjugated

### Note

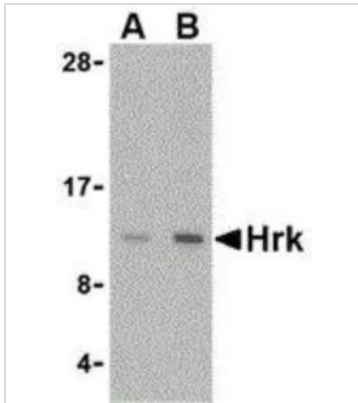
For laboratory research use only. Not for any clinical, therapeutic, or diagnostic use in humans or animals. Not for animal or human consumption.

Purchasers shall not, and agree not to enable third parties to, analyze, copy, reverse engineer or otherwise attempt to determine the structure or sequence of the product.



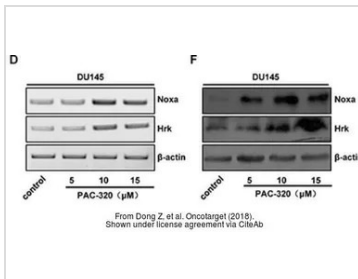
For full product information, images and publications, please visit our [website](#).

## DATA IMAGES



### GTx54049 WB Image

WB analysis of mouse pancreas tissue lysate using GTx54049 Hrk antibody at (A) 2.5 and (B) 5ug/ml.



### GTx54049 WB Image

The data was published in the journal Oncotarget in 2018. [PMID: 29416632](https://pubmed.ncbi.nlm.nih.gov/29416632/)



For full product information, images and publications, please visit our [website](https://www.genetex.com).