

TIM-3 antibody [RMT3-23] (Low endotoxin, azide free)

Cat. No. GTX54054

Host	Rat
Clonality	Monoclonal
Isotype	IgG2a
Application	ICC/IF, IHC-P, IHC-Fr, FACS, Functional Assay
Reactivity	Mouse

Reference (7)

Package

250 µg

APPLICATION

Application Note

*Optimal dilutions/concentrations should be determined by the researcher.

Suggested dilution	Recommended dilution
ICC/IF	Assay dependent
IHC-P	Assay dependent
IHC-Fr	Assay dependent
FACS	1/25-1/200
Functional Assay	Assay dependent

Note : Use 10µl of the suggested working dilution to label 10⁶ cells in 100µl.

Not tested in other applications.

Calculated MW 31 kDa. ([Note](#))

PROPERTIES

Form	Liquid
Buffer	PBS
Storage	Store as concentrated solution. Centrifuge briefly prior to opening vial. For short-term storage (1-2 weeks), store at 4°C. For long-term storage, aliquot and store at -20°C or below. Avoid multiple freeze-thaw cycles.
Concentration	1 mg/ml (Please refer to the vial label for the specific concentration.)
Immunogen	Tim-3-Ig, consisting of amino acids 1-191 of mouse Tim-3, coupled with the Fc portion of mouse IgG2a.
Purification	Protein G purified From tissue culture supernatant
Conjugation	Unconjugated

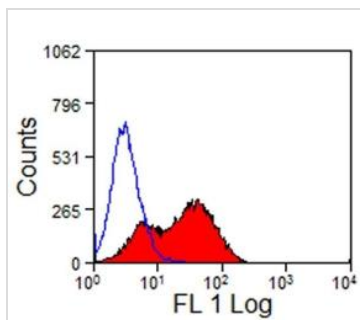


For full product information, images and publications, please visit our [website](#).

For laboratory research use only. Not for any clinical, therapeutic, or diagnostic use in humans or animals. Not for animal or human consumption.

Note

Purchasers shall not, and agree not to enable third parties to, analyze, copy, reverse engineer or otherwise attempt to determine the structure or sequence of the product.

DATA IMAGES

GTX54054 FACS Image

FACS analysis of Tim-3 transfected LY5178Y cells using GTX54054 TIM-3 antibody [RMT3-23] (Low endotoxin, azide free).



For full product information, images and publications, please visit our [website](#).