

# TIM-3 antibody [RMT3-23] (FITC)

**Cat. No. GTX54055**

<b>Host</b>	Rat
<b>Clonality</b>	Monoclonal
<b>Isotype</b>	IgG2a
<b>Application</b>	FACS
<b>Reactivity</b>	Mouse

Reference ( 2 )  
Package  
100 µg

## APPLICATION

### Application Note

\*Optimal dilutions/concentrations should be determined by the researcher.

Suggested dilution	Recommended dilution
FACS	Neat-1/10

**Note : Use 10µl of the suggested working dilution to label 10<sup>6</sup> cells in 100µl.**

Not tested in other applications.

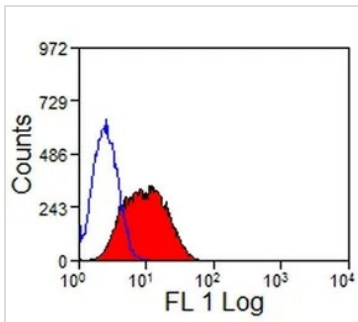
**Calculated MW** 31 kDa. ( [Note](#) )

## PROPERTIES

<b>Form</b>	Liquid
<b>Buffer</b>	PBS, 1% BSA
<b>Preservative</b>	0.09% Sodium azide
<b>Storage</b>	Store as concentrated solution. Centrifuge briefly prior to opening vial. For short-term storage (1-2 weeks), store at 4°C. For long-term storage, aliquot and store at -20°C or below. Avoid multiple freeze-thaw cycles. Protect from light.
<b>Concentration</b>	0.1 mg/ml (Please refer to the vial label for the specific concentration.)
<b>Immunogen</b>	Tim-3-Ig, consisting of amino acids 1-191 of mouse Tim-3, coupled with the Fc portion of mouse IgG2a.
<b>Purification</b>	Protein G purified From tissue culture supernatant
<b>Conjugation</b>	Fluorescein isothiocyanate (FITC)
<b>Note</b>	For laboratory research use only. Not for any clinical, therapeutic, or diagnostic use in humans or animals. Not for animal or human consumption.  Purchasers shall not, and agree not to enable third parties to, analyze, copy, reverse engineer or otherwise attempt to determine the structure or sequence of the product.



For full product information, images and publications, please visit our [website](#).

**DATA IMAGES**

**GTX54055 FACS Image**

FACS analysis of Tim-3 transfected LY5178Y cells using GTX54055 TIM-3 antibody [RMT3-23] (FITC).



For full product information, images and publications, please visit our [website](https://www.genetex.com).