

## IL27 Receptor alpha antibody

Cat. No. GTX54076

|              |                   |
|--------------|-------------------|
| Host         | Rabbit            |
| Clonality    | Polyclonal        |
| Isotype      | IgG               |
| Applications | WB, ICC/IF, IHC-P |
| Reactivity   | Human, Mouse, Rat |

Package  
100 µg

## Applications

## Application Note

\*Optimal dilutions/concentrations should be determined by the researcher.

| Suggested dilution | Recommended dilution |
|--------------------|----------------------|
| WB                 | 0.5-1µg/ml           |
| ICC/IF             | 20µg/ml              |
| IHC-P              | 5µg/ml               |

**Note : This product requires antigen retrieval using heat treatment prior to staining of paraffin sections. Sodium citrate buffer pH 6.0 is recommended for this purpose.**

Not tested in other applications.

|               |   |
|---------------|---|
| Calculated MW | 69 kDa. ( <a href="#">Note</a> )  |
| Product Note  | This antibody recognizes the carboxy terminal of the alpha subunit of the human IL-27 receptor, otherwise known as the T cell cytokine receptor (TCCR). |

## Properties

|               |  |
|---------------|--|
| Form          | Liquid   |
| Buffer        | PBS  |
| Preservative  | 0.02% Sodium azide   |
| Storage       | Store as concentrated solution. Centrifuge briefly prior to opening vial. For short-term storage (1-2 weeks), store at 4°C. For long-term storage, aliquot and store at -20°C or below. Avoid multiple freeze-thaw cycles. |
| Concentration | 0.5 mg/ml (Please refer to the vial label for the specific concentration.)   |
| Immunogen     | A peptide corresponding to amino acids near the carboxy terminus of human IL-27Rα precursor.   |
| Purification  | Purified by affinity chromatography  |
| Conjugation   | Unconjugated   |



For full product information, images and publications, please visit our [website](#).

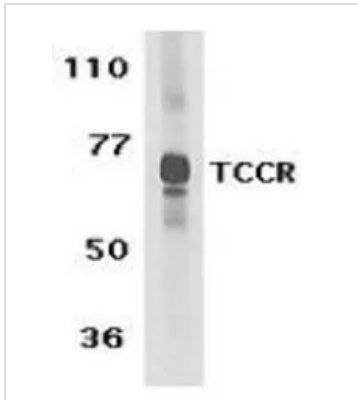
Date 2026 / 01 / 16 Page 1 of 2

For laboratory research use only. Not for any clinical, therapeutic, or diagnostic use in humans or animals. Not for animal or human consumption.

**Note**

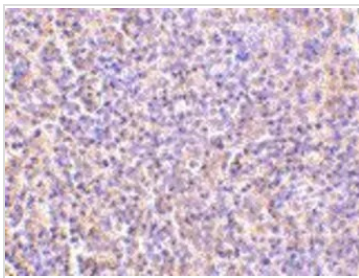
Purchasers shall not, and agree not to enable third parties to, analyze, copy, reverse engineer or otherwise attempt to determine the structure or sequence of the product.

## DATA IMAGES



**GTX54076 WB Image**

WB analysis of human spleen tissue lysate using GTX54076 IL27 Receptor alpha antibody.



**GTX54076 IHC-P Image**

IHC analysis of human spleen tissue using GTX54076 IL27 Receptor alpha antibody.



For full product information, images and publications, please visit our [website](#).