

# Histone H3K4me1 (mono-methyl Lys4) antibody

**Cat. No. GTX54100**

<b>Host</b>	Rabbit
<b>Clonality</b>	Polyclonal
<b>Isotype</b>	IgG
<b>Applications</b>	WB, ICC/IF, IHC-P, IHC-Fr, Dot, ChIP assay
<b>Reactivity</b>	Human, Mouse, Rat

References ( 2 )

Package

100 µl

## Applications

### Application Note

\*Optimal dilutions/concentrations should be determined by the researcher.

Suggested dilution	Recommended dilution
WB	1:500 - 1:2000
ICC/IF	1:50 - 1:200
IHC-P	1:50 - 1:200
IHC-Fr	Assay dependent
Dot	Assay dependent
ChIP assay	1:20 - 1:100

Not tested in other applications.

## Properties

<b>Form</b>	Liquid
<b>Buffer</b>	PBS, 50% Glycerol
<b>Preservative</b>	0.02% Sodium azide
<b>Storage</b>	Store as concentrated solution. Centrifuge briefly prior to opening vial. For short-term storage (1-2 weeks), store at 4°C. For long-term storage, aliquot and store at -20°C or below. Avoid multiple freeze-thaw cycles.
<b>Concentration</b>	1 mg/ml (Please refer to the vial label for the specific concentration.)
<b>Immunogen</b>	A synthetic methylated peptide corresponding to residues surrounding K4 of human histone H3
<b>Purification</b>	Purified by affinity chromatography
<b>Conjugation</b>	Unconjugated

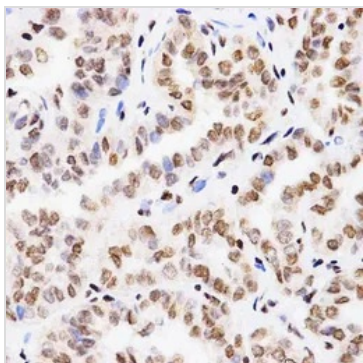


For full product information, images and publications, please visit our [website](#).

For laboratory research use only. Not for any clinical, therapeutic, or diagnostic use in humans or animals. Not for animal or human consumption.

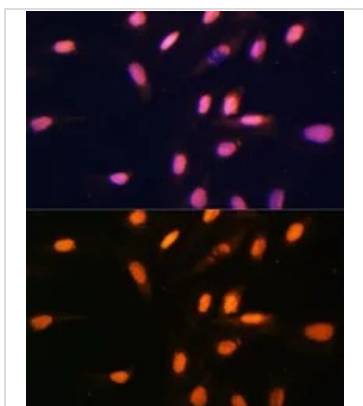
**Note**

Purchasers shall not, and agree not to enable third parties to, analyze, copy, reverse engineer or otherwise attempt to determine the structure or sequence of the product.

**DATA IMAGES**

**GTX54100 IHC-P Image**

IHC-P analysis of human thyroid cancer tissue using GTX54100 Histone H3K4me1 (mono-methyl Lys4) antibody.

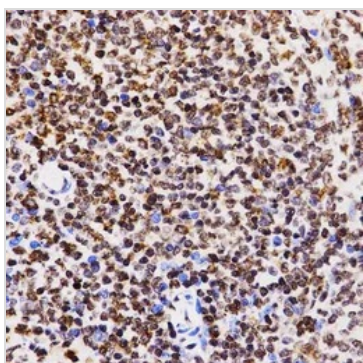
Dilution : 1:200


**GTX54100 ICC/IF Image**

ICC/IF analysis of U2OS cells using GTX54100 Histone H3K4me1 (mono-methyl Lys4) antibody.

Blue : DAPI

Dilution : 1:100


**GTX54100 IHC-P Image**

IHC-P analysis of rat spleen tissue using GTX54100 Histone H3K4me1 (mono-methyl Lys4) antibody.

Dilution : 1:200



For full product information, images and publications, please visit our [website](#).