

# Histone H3K9me1 (mono-methyl Lys9) antibody

**Cat. No. GTX54101**

<b>Host</b>	Rabbit
<b>Clonality</b>	Polyclonal
<b>Isotype</b>	IgG
<b>Applications</b>	WB, ICC/IF, IHC-P, Dot, ChIP assay
<b>Reactivity</b>	Human, Mouse, Rat

**Package**  
100 µl

## Applications

### Application Note

\*Optimal dilutions/concentrations should be determined by the researcher.

Suggested dilution	Recommended dilution
WB	1:500 - 1:2000
ICC/IF	1:50 - 1:200
IHC-P	1:50 - 1:200
Dot	Assay dependent
ChIP assay	1:20 - 1:100

Not tested in other applications.

## Properties

<b>Form</b>	Liquid
<b>Buffer</b>	PBS, 50% Glycerol
<b>Preservative</b>	0.05% ProClin 300
<b>Storage</b>	Store as concentrated solution. Centrifuge briefly prior to opening vial. For short-term storage (1-2 weeks), store at 4°C. For long-term storage, aliquot and store at -20°C or below. Avoid multiple freeze-thaw cycles.
<b>Concentration</b>	1 mg/ml (Please refer to the vial label for the specific concentration.)
<b>Immunogen</b>	A synthetic methylated peptide corresponding to residues surrounding K9 of human histone H3
<b>Purification</b>	Purified by affinity chromatography
<b>Conjugation</b>	Unconjugated

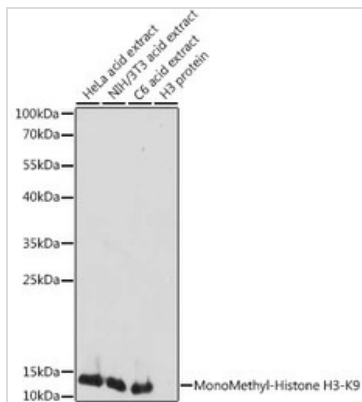
### Note

For laboratory research use only. Not for any clinical, therapeutic, or diagnostic use in humans or animals. Not for animal or human consumption.

Purchasers shall not, and agree not to enable third parties to, analyze, copy, reverse engineer or otherwise attempt to determine the structure or sequence of the product.



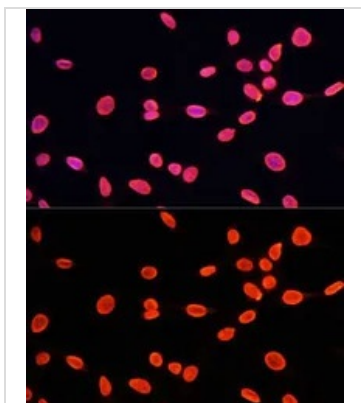
For full product information, images and publications, please visit our [website](#).

**DATA IMAGES**

**GTX54101 WB Image**

WB analysis of various sample lysates using GTX54101 Histone H3K9me1 (mono-methyl Lys9) antibody.

Dilution : 1:1000

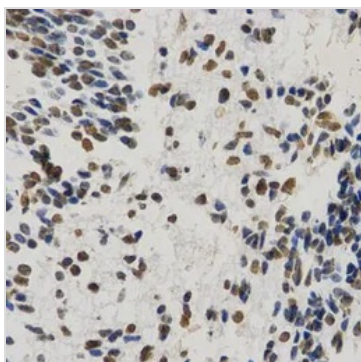
Loading : 25µg per lane


**GTX54101 ICC/IF Image**

ICC/IF analysis of C6 cells using GTX54101 Histone H3K9me1 (mono-methyl Lys9) antibody.

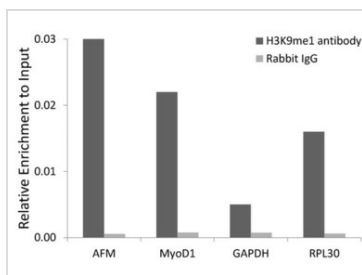
Blue : DAPI

Dilution : 1:100


**GTX54101 IHC-P Image**

IHC-P analysis of human embryo brain tissue using GTX54101 Histone H3K9me1 (mono-methyl Lys9) antibody.

Dilution : 1:200


**GTX54101 ChIP assay Image**

ChIP analysis of 293 cell lysate using GTX54101 Histone H3K9me1 (mono-methyl Lys9) antibody. The amount of immunoprecipitated DNA was checked by quantitative PCR. Histogram was constructed by the ratios of the immunoprecipitated DNA to the input.



For full product information, images and publications, please visit our [website](http://www.genetex.com).