

Histone H3K9me3 (tri-methyl Lys9) antibody

Cat. No. GTX54103

| | |
|--------------------|------------------------------------|
| Host | Rabbit |
| Clonality | Polyclonal |
| Isotype | IgG |
| Application | WB, ICC/IF, IHC-P, Dot, ChIP assay |
| Reactivity | Human, Mouse, Rat |

Package
100 µl

APPLICATION

Application Note

*Optimal dilutions/concentrations should be determined by the researcher.

| Suggested dilution | Recommended dilution |
|--------------------|----------------------|
| WB | 1:500 - 1:2000 |
| ICC/IF | 1:50 - 1:200 |
| IHC-P | 1:50 - 1:200 |
| Dot | Assay dependent |
| ChIP assay | 1:50 - 1:200 |

Not tested in other applications.

PROPERTIES

| | |
|----------------------|--|
| Form | Liquid |
| Buffer | PBS, 50% Glycerol |
| Preservative | 0.02% Sodium azide |
| Storage | Store as concentrated solution. Centrifuge briefly prior to opening vial. For short-term storage (1-2 weeks), store at 4°C. For long-term storage, aliquot and store at -20°C or below. Avoid multiple freeze-thaw cycles. |
| Concentration | 1 mg/ml (Please refer to the vial label for the specific concentration.) |
| Immunogen | A synthetic methylated peptide corresponding to residues surrounding K9 of human histone H3 |
| Purification | Purified by affinity chromatography |
| Conjugation | Unconjugated |

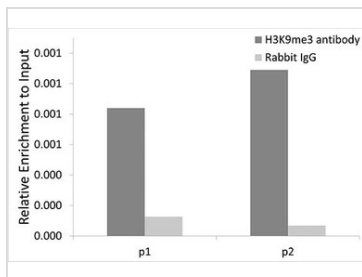
Note

For laboratory research use only. Not for any clinical, therapeutic, or diagnostic use in humans or animals. Not for animal or human consumption.

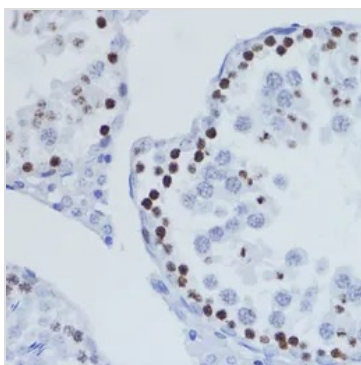
Purchasers shall not, and agree not to enable third parties to, analyze, copy, reverse engineer or otherwise attempt to determine the structure or sequence of the product.



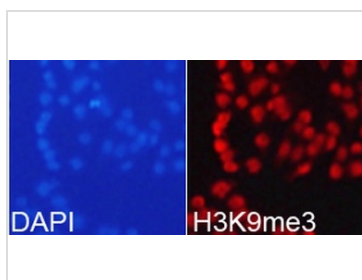
For full product information, images and publications, please visit our [website](#).

DATA IMAGES

GTX54103 ChIP assay Image

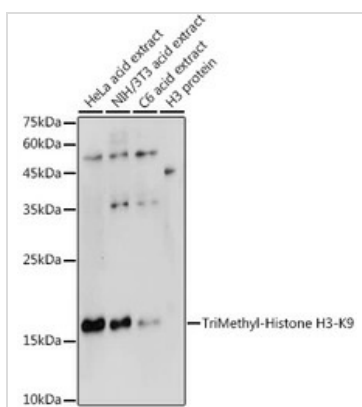
ChIP analysis of 293T cell lysate using GTX54103 Histone H3K9me3 (tri-methyl Lys9) antibody. The amount of immunoprecipitated DNA was checked by quantitative PCR. Histogram was constructed by the ratios of the immunoprecipitated DNA to the input.


GTX54103 IHC-P Image

IHC-P analysis of rat testis tissue using GTX54103 Histone H3K9me3 (tri-methyl Lys9) antibody.
Dilution : 1:200


GTX54103 ICC/IF Image

ICC/IF analysis of 293T cells using GTX54103 Histone H3K9me3 (tri-methyl Lys9) antibody.
Blue : DAPI


GTX54103 WB Image

WB analysis of various sample lysates using GTX54103 Histone H3K9me3 (tri-methyl Lys9) antibody.
Dilution : 1:500
Loading : 25µg per lane



For full product information, images and publications, please visit our [website](https://www.genetex.com).