

Histone H3K27me2 (di-methyl Lys27) antibody

Cat. No. GTX54105

| | |
|---------------------|------------------------------------|
| Host | Rabbit |
| Clonality | Polyclonal |
| Isotype | IgG |
| Applications | WB, ICC/IF, IHC-P, Dot, ChIP assay |
| Reactivity | Human, Mouse, Rat |

Package
100 µl

Applications

Application Note

*Optimal dilutions/concentrations should be determined by the researcher.

| Suggested dilution | Recommended dilution |
|--------------------|----------------------|
| WB | 1:500 - 1:2000 |
| ICC/IF | 1:50 - 1:200 |
| IHC-P | 1:50 - 1:200 |
| Dot | Assay dependent |
| ChIP assay | 1:20 - 1:100 |

Not tested in other applications.

Properties

| | |
|----------------------|--|
| Form | Liquid |
| Buffer | PBS, 50% Glycerol |
| Preservative | 0.05% ProClin 300 |
| Storage | Store as concentrated solution. Centrifuge briefly prior to opening vial. For short-term storage (1-2 weeks), store at 4°C. For long-term storage, aliquot and store at -20°C or below. Avoid multiple freeze-thaw cycles. |
| Concentration | 1 mg/ml (Please refer to the vial label for the specific concentration.) |
| Immunogen | A synthetic methylated peptide corresponding to residues surrounding K27 of human histone H3 |
| Purification | Purified by affinity chromatography |
| Conjugation | Unconjugated |

Note

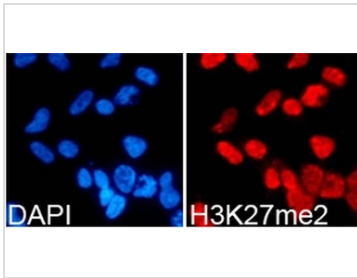
For laboratory research use only. Not for any clinical, therapeutic, or diagnostic use in humans or animals. Not for animal or human consumption.

Purchasers shall not, and agree not to enable third parties to, analyze, copy, reverse engineer or otherwise attempt to determine the structure or sequence of the product.



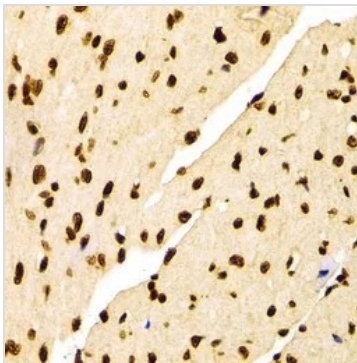
For full product information, images and publications, please visit our [website](#).

DATA IMAGES



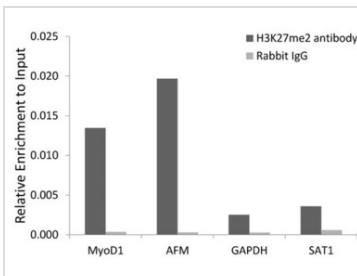
GTX54105 ICC/IF Image

ICC/IF analysis of 293T cells using GTX54105 Histone H3K27me2 (di-methyl Lys27) antibody.
Blue : DAPI



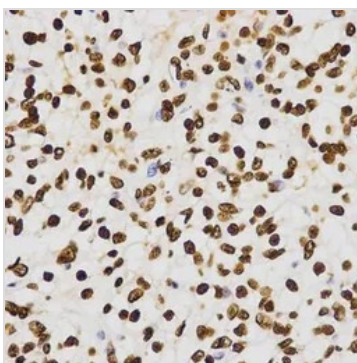
GTX54105 IHC-P Image

IHC-P analysis of mouse heart tissue using GTX54105 Histone H3K27me2 (di-methyl Lys27) antibody.
Dilution : 1:100



GTX54105 ChIP assay Image

ChIP analysis of 293 cell lysate using GTX54105 Histone H3K27me2 (di-methyl Lys27) antibody. The amount of immunoprecipitated DNA was checked by quantitative PCR. Histogram was constructed by the ratios of the immunoprecipitated DNA to the input.



GTX54105 IHC-P Image

IHC-P analysis of human kidney cancer tissue using GTX54105 Histone H3K27me2 (di-methyl Lys27) antibody.
Dilution : 1:200



For full product information, images and publications, please visit our [website](https://www.genetex.com).