

## Histone H3K27me3 (tri-methyl Lys27) antibody

Cat. No. GTX54106

Host	Rabbit
Clonality	Polyclonal
Isotype	IgG
Applications	WB, ICC/IF, IHC-P, Dot, ChIP assay
Reactivity	Human, Mouse, Rat

References ( 1 )

Package

100 µl

## Applications

## Application Note

\*Optimal dilutions/concentrations should be determined by the researcher.

Suggested dilution	Recommended dilution
WB	1:500 - 1:2000
ICC/IF	1:50 - 1:200
IHC-P	1:50 - 1:200
Dot	Assay dependent
ChIP assay	1:20 - 1:100

Not tested in other applications.

## Properties

Form	Liquid
Buffer	PBS, 50% Glycerol
Preservative	0.02% Sodium azide
Storage	Store as concentrated solution. Centrifuge briefly prior to opening vial. For short-term storage (1-2 weeks), store at 4°C. For long-term storage, aliquot and store at -20°C or below. Avoid multiple freeze-thaw cycles.
Concentration	1 mg/ml (Please refer to the vial label for the specific concentration.)
Immunogen	A synthetic methylated peptide corresponding to residues surrounding K27 of human histone H3
Purification	Purified by affinity chromatography
Conjugation	Unconjugated

## Note

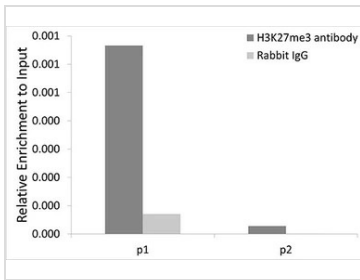
For laboratory research use only. Not for any clinical, therapeutic, or diagnostic use in humans or animals. Not for animal or human consumption.

Purchasers shall not, and agree not to enable third parties to, analyze, copy, reverse engineer or otherwise attempt to determine the structure or sequence of the product.

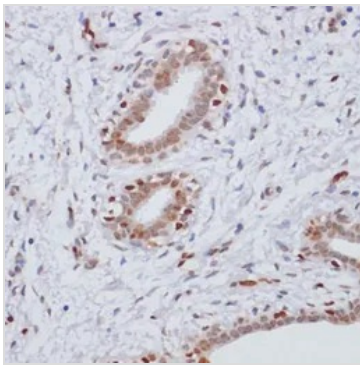


For full product information, images and publications, please visit our [website](#).

## DATA IMAGES

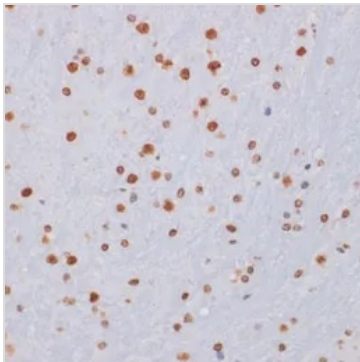

**GTX54106 ChIP assay Image**

ChIP analysis of 293T cell lysate using GTX54106 Histone H3K27me3 (tri-methyl Lys27) antibody. The amount of immunoprecipitated DNA was checked by quantitative PCR. Histogram was constructed by the ratios of the immunoprecipitated DNA to the input.


**GTX54106 IHC-P Image**

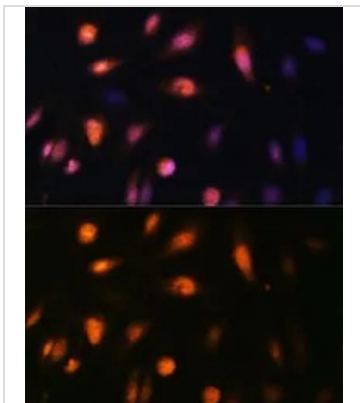
IHC-P analysis of human breast cancer tissue using GTX54106 Histone H3K27me3 (tri-methyl Lys27) antibody.

Dilution : 1:100


**GTX54106 IHC-P Image**

IHC-P analysis of mouse brain tissue using GTX54106 Histone H3K27me3 (tri-methyl Lys27) antibody.

Dilution : 1:100


**GTX54106 ICC/IF Image**

ICC/IF analysis of U2OS cells using GTX54106 Histone H3K27me3 (tri-methyl Lys27) antibody.

Blue : DAPI

Dilution : 1:100



For full product information, images and publications, please visit our [website](https://www.genetex.com).