

Histone H3K79me3 (tri-methyl Lys79) antibody

Cat. No. GTX54111

| | |
|---------------------|------------------------------------|
| Host | Rabbit |
| Clonality | Polyclonal |
| Isotype | IgG |
| Applications | WB, ICC/IF, IHC-P, Dot, ChIP assay |
| Reactivity | Human, Mouse, Rat |

Package
100 µl

Applications

Application Note

*Optimal dilutions/concentrations should be determined by the researcher.

| Suggested dilution | Recommended dilution |
|--------------------|----------------------|
| WB | 1:500 - 1:2000 |
| ICC/IF | 1:50 - 1:200 |
| IHC-P | 1:50 - 1:200 |
| Dot | Assay dependent |
| ChIP assay | 1:20 - 1:100 |

Not tested in other applications.

Properties

| | |
|----------------------|--|
| Form | Liquid |
| Buffer | PBS, 50% Glycerol |
| Preservative | 0.05% ProClin 300 |
| Storage | Store as concentrated solution. Centrifuge briefly prior to opening vial. For short-term storage (1-2 weeks), store at 4°C. For long-term storage, aliquot and store at -20°C or below. Avoid multiple freeze-thaw cycles. |
| Concentration | 1 mg/ml (Please refer to the vial label for the specific concentration.) |
| Immunogen | A synthetic methylated peptide corresponding to residues surrounding K79 of human histone H3 |
| Purification | Purified by affinity chromatography |
| Conjugation | Unconjugated |

Note

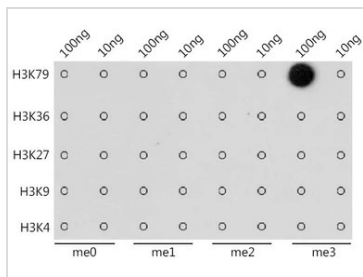
For laboratory research use only. Not for any clinical, therapeutic, or diagnostic use in humans or animals. Not for animal or human consumption.

Purchasers shall not, and agree not to enable third parties to, analyze, copy, reverse engineer or otherwise attempt to determine the structure or sequence of the product.



For full product information, images and publications, please visit our [website](#).

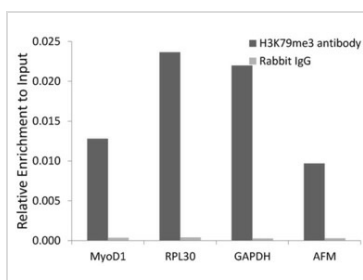
DATA IMAGES



GTX54111 Dot Image

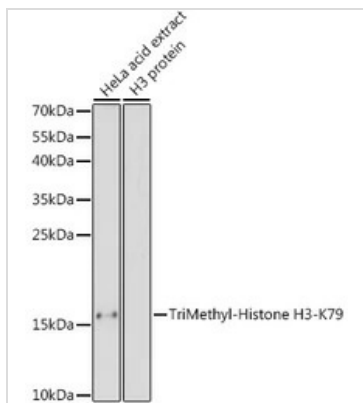
Dot blot analysis of all sorts of methylation peptides using GTX54111 Histone H3K79me3 (tri-methyl Lys79) antibody.

Dilution : 1:1000



GTX54111 ChIP assay Image

ChIP analysis of 293 cell lysate using GTX54111 Histone H3K79me3 (tri-methyl Lys79) antibody. The amount of immunoprecipitated DNA was checked by quantitative PCR. Histogram was constructed by the ratios of the immunoprecipitated DNA to the input.

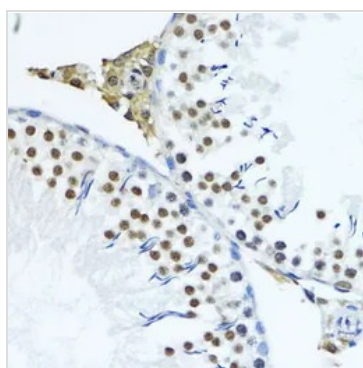


GTX54111 WB Image

WB analysis of HeLa cell lysate using GTX54111 Histone H3K79me3 (tri-methyl Lys79) antibody.

Dilution : 1:1000

Loading : 25µg per lane



GTX54111 IHC-P Image

IHC-P analysis of rat testis tissue using GTX54111 Histone H3K79me3 (tri-methyl Lys79) antibody.

Dilution : 1:200



For full product information, images and publications, please visit our [website](#).