

# Histone H3R26me2 (Asymmetric Di-methyl Arg26) antibody

**Cat. No. GTX54115**

<b>Host</b>	Rabbit
<b>Clonality</b>	Polyclonal
<b>Isotype</b>	IgG
<b>Applications</b>	WB, ICC/IF
<b>Reactivity</b>	Human, Mouse

**Package**  
100 µl

## Applications

### Application Note

\*Optimal dilutions/concentrations should be determined by the researcher.

Suggested dilution	Recommended dilution
WB	1:500 - 1:2000
ICC/IF	1:50 - 1:200

Not tested in other applications.

## Properties

<b>Form</b>	Liquid
<b>Buffer</b>	PBS, 50% Glycerol
<b>Preservative</b>	0.02% Sodium azide
<b>Storage</b>	Store as concentrated solution. Centrifuge briefly prior to opening vial. For short-term storage (1-2 weeks), store at 4°C. For long-term storage, aliquot and store at -20°C or below. Avoid multiple freeze-thaw cycles.
<b>Concentration</b>	1 mg/ml (Please refer to the vial label for the specific concentration.)
<b>Immunogen</b>	A synthetic methylated peptide corresponding to residues surrounding Arg26 of human histone H3
<b>Purification</b>	Purified by affinity chromatography
<b>Conjugation</b>	Unconjugated

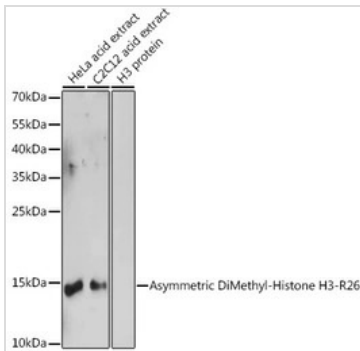
### Note

For laboratory research use only. Not for any clinical, therapeutic, or diagnostic use in humans or animals. Not for animal or human consumption.

Purchasers shall not, and agree not to enable third parties to, analyze, copy, reverse engineer or otherwise attempt to determine the structure or sequence of the product.



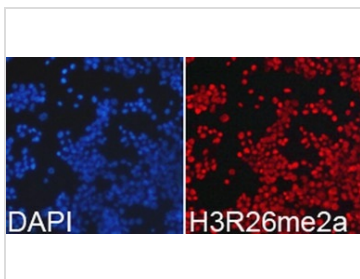
For full product information, images and publications, please visit our [website](#).

**DATA IMAGES**

**GTX54115 WB Image**

WB analysis of various sample lysates using GTX54115 Histone H3R26me2 (Asymmetric Di-methyl Arg26) antibody.

Dilution : 1:1000

Loading : 25µg per lane


**GTX54115 ICC/IF Image**

ICC/IF analysis of 293T cells using GTX54115 Histone H3R26me2 (Asymmetric Di-methyl Arg26) antibody.

Blue : DAPI



For full product information, images and publications, please visit our [website](https://www.genetex.com).