

Histone H4R3me2 (di-methyl Arg3) antibody

Cat. No. GTX54116

Host	Rabbit
Clonality	Polyclonal
Isotype	IgG
Applications	WB, ICC/IF, IHC-P, Dot
Reactivity	Human, Mouse, Rat

Package
100 µl

Applications

Application Note

*Optimal dilutions/concentrations should be determined by the researcher.

Suggested dilution	Recommended dilution
WB	1:500 - 1:2000
ICC/IF	1:50 - 1:200
IHC-P	1:50 - 1:200
Dot	Assay dependent

Not tested in other applications.

Properties

Form	Liquid
Buffer	PBS, 50% Glycerol
Preservative	0.02% Sodium azide
Storage	Store as concentrated solution. Centrifuge briefly prior to opening vial. For short-term storage (1-2 weeks), store at 4°C. For long-term storage, aliquot and store at -20°C or below. Avoid multiple freeze-thaw cycles.
Concentration	1 mg/ml (Please refer to the vial label for the specific concentration.)
Immunogen	A synthetic methylated peptide corresponding to residues surrounding Arg3 of human histone H4
Purification	Purified by affinity chromatography
Conjugation	Unconjugated

Note

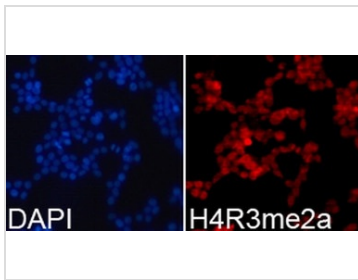
For laboratory research use only. Not for any clinical, therapeutic, or diagnostic use in humans or animals. Not for animal or human consumption.

Purchasers shall not, and agree not to enable third parties to, analyze, copy, reverse engineer or otherwise attempt to determine the structure or sequence of the product.

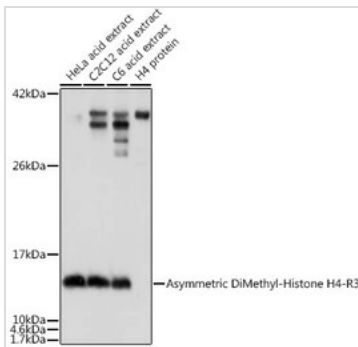


For full product information, images and publications, please visit our [website](#).

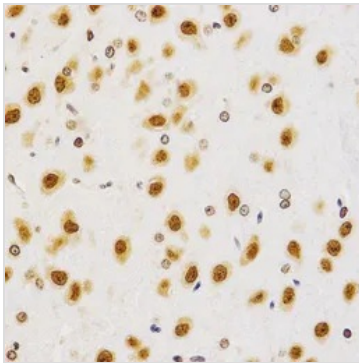
DATA IMAGES

**GTX54116 ICC/IF Image**

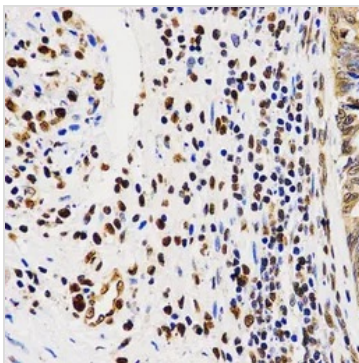
ICC/IF analysis of 293T cells using GTX54116 Histone H4R3me2 (di-methyl Arg3) antibody.
Blue : DAPI

**GTX54116 WB Image**

WB analysis of various sample lysates using GTX54116 Histone H4R3me2 (di-methyl Arg3) antibody.
Loading : 25µg per lane

**GTX54116 IHC-P Image**

IHC-P analysis of rat brain tissue using GTX54116 Histone H4R3me2 (di-methyl Arg3) antibody.
Dilution : 1:200

**GTX54116 IHC-P Image**

IHC-P analysis of human rectal cancer tissue using GTX54116 Histone H4R3me2 (di-methyl Arg3) antibody.
Dilution : 1:200



For full product information, images and publications, please visit our [website](#).